

Datasheet for ABIN1538556
anti-LYPLA1 antibody (AA 65-94)[Go to Product page](#)

1 Image

Overview

Quantity:	400 µL
Target:	LYPLA1
Binding Specificity:	AA 65-94
Reactivity:	Human
Host:	Rabbit
Clonality:	Polyclonal
Conjugate:	This LYPLA1 antibody is un-conjugated
Application:	Western Blotting (WB)

Product Details

Immunogen:	This LYPLA1 antibody is generated from rabbits immunized with a KLH conjugated synthetic peptide between 65-94 amino acids from the Central region of human LYPLA1.
Clone:	RB39836
Isotype:	Ig Fraction
Predicted Reactivity:	M, Rb, Rat
Purification:	This antibody is purified through a protein A column, followed by peptide affinity purification.

Target Details

Target:	LYPLA1
Alternative Name:	LYPLA1 (LYPLA1 Products)

Target Details

Background: Lysophospholipases are enzymes that act on biological membranes to regulate the multifunctional lysophospholipids. The protein encoded by this gene hydrolyzes lysophosphatidylcholine in both monomeric and micellar forms. The use of alternate polyadenylation sites has been found for this gene. There are alternatively spliced transcript variants described for this gene but the full length nature is not known yet.

Molecular Weight: 24670

Gene ID: 10434

NCBI Accession: [NP_001266285](#), [NP_001266286](#), [NP_001266287](#), [NP_001266288](#), [NP_001266289](#), [NP_006321](#)

UniProt: [O75608](#)

Application Details

Application Notes: WB: 1:1000

Restrictions: For Research Use only

Handling

Format: Liquid

Buffer: Purified polyclonal antibody supplied in PBS with 0.09 % (W/V) sodium azide.

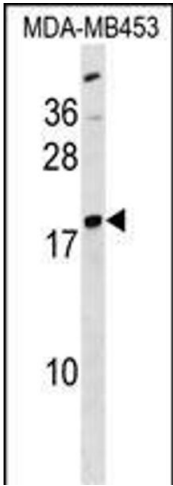
Preservative: Sodium azide

Precaution of Use: This product contains Sodium azide: a POISONOUS AND HAZARDOUS SUBSTANCE which should be handled by trained staff only.

Storage: 4 °C,-20 °C

Storage Comment: LYPLA1 Antibody (Center) can be refrigerated at 2-8 °C for up to 6 months. For long term storage, keep at -20 °C.

Expiry Date: 6 months



Western Blotting

Image 1. LYPLA1 Antibody (Center) (ABIN1538556 and ABIN2838111) western blot analysis in MDA-M cell line lysates (35 µg/lane). This demonstrates the LYPLA1 antibody detected the LYPLA1 protein (arrow).