

Datasheet for ABIN1538561
anti-NEO1 antibody (AA 657-685)[Go to Product page](#)

1 Image

Overview

Quantity:	400 µL
Target:	NEO1
Binding Specificity:	AA 657-685
Reactivity:	Human, Mouse
Host:	Rabbit
Clonality:	Polyclonal
Conjugate:	This NEO1 antibody is un-conjugated
Application:	Western Blotting (WB)

Product Details

Immunogen:	This NEO1 antibody is generated from rabbits immunized with a KLH conjugated synthetic peptide between 657-685 amino acids from the Central region of human NEO1.
Clone:	RB37040
Isotype:	IgG
Predicted Reactivity:	Rat
Purification:	This antibody is purified through a protein A column, followed by peptide affinity purification.

Target Details

Target:	NEO1
Alternative Name:	NEO1 (NEO1 Products)

Target Details

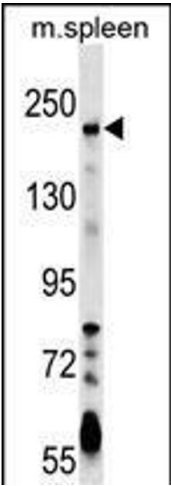
Background:	<p>This gene encodes a cell surface protein that is a member of the immunoglobulin superfamily. The encoded protein consists of four N-terminal immunoglobulin-like domains, six fibronectin type III domains, a transmembrane domain and a C-terminal internal domain that shares homology with the tumor suppressor candidate gene DCC. This protein may be involved in cell growth and differentiation and in cell-cell adhesion. Defects in this gene are associated with cell proliferation in certain cancers. Alternate splicing results in multiple transcript variants. [provided by RefSeq].</p>
Molecular Weight:	160017
Gene ID:	4756
NCBI Accession:	NP_001166094 , NP_001166095 , NP_002490
UniProt:	Q92859
Pathways:	Transition Metal Ion Homeostasis , Regulation of Muscle Cell Differentiation , Tube Formation

Application Details

Application Notes:	WB: 1:1000
Restrictions:	For Research Use only

Handling

Format:	Liquid
Buffer:	Purified polyclonal antibody supplied in PBS with 0.09 % (W/V) sodium azide.
Preservative:	Sodium azide
Precaution of Use:	This product contains Sodium azide: a POISONOUS AND HAZARDOUS SUBSTANCE which should be handled by trained staff only.
Storage:	4 °C,-20 °C
Storage Comment:	NEO1 Antibody (Center) can be refrigerated at 2-8 °C for up to 6 months. For long term storage, keep at -20 °C.
Expiry Date:	6 months



Western Blotting

Image 1. NEO1 Antibody (Center) (ABIN1538561 and ABIN2849343) western blot analysis in mouse spleen tissue lysates (35 µg/lane). This demonstrates the NEO1 antibody detected the NEO1 protein (arrow).