



[Go to Product page](#)

Datasheet for ABIN1538574  
**anti-CRADD antibody (AA 69-98)**

1 Image

Overview

Quantity:	400 µL
Target:	CRADD
Binding Specificity:	AA 69-98
Reactivity:	Human
Host:	Rabbit
Clonality:	Polyclonal
Conjugate:	This CRADD antibody is un-conjugated
Application:	Western Blotting (WB)

Product Details

Immunogen:	This CRADD antibody is generated from rabbits immunized with a KLH conjugated synthetic peptide between 69-98 amino acids from the Central region of human CRADD.
Clone:	RB39320
Isotype:	Ig Fraction
Purification:	This antibody is purified through a protein A column, followed by peptide affinity purification.

Target Details

Target:	CRADD
Alternative Name:	CRADD ( <a href="#">CRADD Products</a> )
Background:	The protein encoded by this gene is a death domain (CARD/DD)-containing protein and has

## Target Details

---

been shown to induce cell apoptosis. Through its CARD domain, this protein interacts with, and thus recruits, caspase 2/ICH1 to the cell death signal transduction complex that includes tumor necrosis factor receptor 1 (TNFR1A), RIPK1/RIP kinase, and numbers of other CARD domain-containing proteins.

Molecular Weight: 22745

Gene ID: 8738

NCBI Accession: [NP\\_003796](#)

UniProt: [P78560](#)

Pathways: [Apoptosis](#), [Caspase Cascade in Apoptosis](#), [Positive Regulation of Endopeptidase Activity](#)

## Application Details

---

Application Notes: WB: 1:1000

Restrictions: For Research Use only

## Handling

---

Format: Liquid

Buffer: Purified polyclonal antibody supplied in PBS with 0.09 % (W/V) sodium azide.

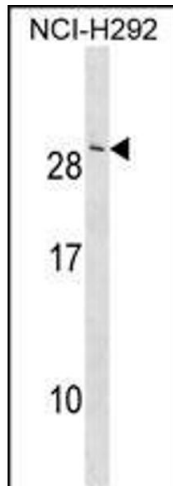
Preservative: Sodium azide

Precaution of Use: This product contains Sodium azide: a POISONOUS AND HAZARDOUS SUBSTANCE which should be handled by trained staff only.

Storage: 4 °C,-20 °C

Storage Comment: CRADD Antibody (Center) can be refrigerated at 2-8 °C for up to 6 months. For long term storage, keep at -20 °C.

Expiry Date: 6 months



### Western Blotting

**Image 1.** CRADD Antibody (Center) (ABIN1538574 and ABIN2850231) western blot analysis in NCI- cell line lysates (35 µg/lane). This demonstrates the CRADD antibody detected the CRADD protein (arrow).