

Datasheet for ABIN1538576
anti-CLCA3P antibody (AA 70-98)[Go to Product page](#)

1 Image

Overview

Quantity:	400 µL
Target:	CLCA3P
Binding Specificity:	AA 70-98
Reactivity:	Human
Host:	Rabbit
Clonality:	Polyclonal
Conjugate:	This CLCA3P antibody is un-conjugated
Application:	Western Blotting (WB)

Product Details

Immunogen:	This CLCA3P antibody is generated from rabbits immunized with a KLH conjugated synthetic peptide between 70-98 amino acids from the Central region of human CLCA3P.
Clone:	RB38732
Isotype:	Ig Fraction
Purification:	This antibody is purified through a protein A column, followed by peptide affinity purification.

Target Details

Target:	CLCA3P
Alternative Name:	CLCA3P (CLCA3P Products)
Background:	MCLCA3 (alias gob-5) is the third murine member of the family of calcium-activated chloride

Target Details

channels (CLCA-family). mCLCA3 plays a role in diseases with secretory dysfunctions, including asthma and cystic fibrosis. The mCLCA3 protein is located in mucin granule membranes of goblet cells of the intestinal, respiratory and reproductive tracts. It is also secreted into the mucin layer on mucosal membranes. The protein appears to be involved in the synthesis, condensation or secretion of mucins.

Molecular Weight: 29971

Gene ID: 9629

UniProt: [Q9Y6N3](#)

Application Details

Application Notes: WB: 1:1000

Restrictions: For Research Use only

Handling

Format: Liquid

Buffer: Purified polyclonal antibody supplied in PBS with 0.09 % (W/V) sodium azide.

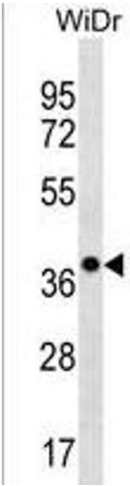
Preservative: Sodium azide

Precaution of Use: This product contains Sodium azide: a POISONOUS AND HAZARDOUS SUBSTANCE which should be handled by trained staff only.

Storage: 4 °C, -20 °C

Storage Comment: CLCA3P Antibody (Center) can be refrigerated at 2-8 °C for up to 6 months. For long term storage, keep at -20 °C.

Expiry Date: 6 months



Western Blotting

Image 1. CLCA3P Antibody (Center) (ABIN1538576 and ABIN2850211) western blot analysis in WiDr cell line lysates (35 µg/lane). This demonstrates the CLCA3P antibody detected the CLCA3P protein (arrow).