



Datasheet for ABIN1538589
anti-PLEKHA6 antibody (AA 710-736)



[Go to Product page](#)

1 Image

Overview

Quantity:	400 µL
Target:	PLEKHA6
Binding Specificity:	AA 710-736
Reactivity:	Human
Host:	Rabbit
Clonality:	Polyclonal
Conjugate:	This PLEKHA6 antibody is un-conjugated
Application:	Western Blotting (WB)

Product Details

Immunogen:	This PLEKHA6 antibody is generated from rabbits immunized with a KLH conjugated synthetic peptide between 710-736 amino acids from the Central region of human PLEKHA6.
Clone:	RB37603
Isotype:	Ig Fraction
Purification:	This antibody is purified through a protein A column, followed by peptide affinity purification.

Target Details

Target:	PLEKHA6
Alternative Name:	PLEKHA6 (PLEKHA6 Products)
Background:	PEPP3 contains an N-terminal pleckstrin homology (PH) domain. It shares significant

Target Details

homology with PEPP1 and PEPP2 only in the PH domain.

Molecular Weight: 117128

Gene ID: 22874

NCBI Accession: [NP_055750](#)

UniProt: [Q9Y2H5](#)

Application Details

Application Notes: WB: 1:1000

Restrictions: For Research Use only

Handling

Format: Liquid

Buffer: Purified polyclonal antibody supplied in PBS with 0.09 % (W/V) sodium azide.

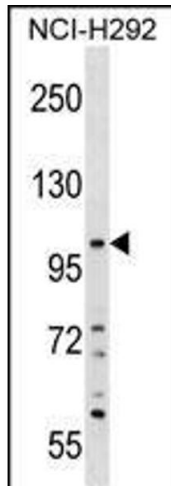
Preservative: Sodium azide

Precaution of Use: This product contains Sodium azide: a POISONOUS AND HAZARDOUS SUBSTANCE which should be handled by trained staff only.

Storage: 4 °C, -20 °C

Storage Comment: PLEKHA6 Antibody (Center) can be refrigerated at 2-8 °C for up to 6 months. For long term storage, keep at -20 °C.

Expiry Date: 6 months



Western Blotting

Image 1. PLEKHA6 Antibody (Center) (ABIN1538589 and ABIN2849360) western blot analysis in NCI- cell line lysates (35 µg/lane). This demonstrates the PLEKHA6 antibody detected the PLEKHA6 protein (arrow).