

Datasheet for ABIN1538592
anti-VPREB1 antibody (AA 71-99)[Go to Product page](#)

1 Image

Overview

Quantity:	400 µL
Target:	VPREB1
Binding Specificity:	AA 71-99
Reactivity:	Human
Host:	Rabbit
Clonality:	Polyclonal
Conjugate:	This VPREB1 antibody is un-conjugated
Application:	Western Blotting (WB)

Product Details

Immunogen:	This VPREB1 antibody is generated from rabbits immunized with a KLH conjugated synthetic peptide between 71-99 amino acids from the Central region of human VPREB1.
Clone:	RB39947
Isotype:	Ig Fraction
Purification:	This antibody is purified through a protein A column, followed by peptide affinity purification.

Target Details

Target:	VPREB1
Alternative Name:	VPREB1 (VPREB1 Products)
Background:	The protein encoded by this gene belongs to the immunoglobulin superfamily and is expressed

Target Details

selectively at the early stages of B cell development, namely, in proB and early preB cells. This gene encodes the iota polypeptide chain that is associated with the Ig-mu chain to form a molecular complex which is expressed on the surface of pre-B cells. The complex is thought to regulate Ig gene rearrangements in the early steps of B-cell differentiation.

Molecular Weight: 16605

Gene ID: 7441

NCBI Accession: [NP_009059](#)

UniProt: [P12018](#)

Pathways: [Production of Molecular Mediator of Immune Response](#), [Regulation of Cell Size](#)

Application Details

Application Notes: WB: 1:1000

Restrictions: For Research Use only

Handling

Format: Liquid

Buffer: Purified polyclonal antibody supplied in PBS with 0.09 % (W/V) sodium azide.

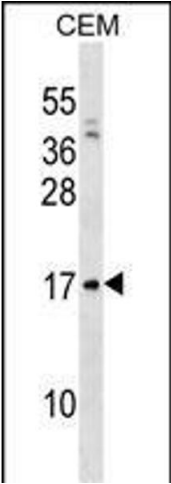
Preservative: Sodium azide

Precaution of Use: This product contains Sodium azide: a POISONOUS AND HAZARDOUS SUBSTANCE which should be handled by trained staff only.

Storage: 4 °C,-20 °C

Storage Comment: VPRED1 Antibody (Center) can be refrigerated at 2-8 °C for up to 6 months. For long term storage, keep at -20 °C.

Expiry Date: 6 months



Western Blotting

Image 1. VPRES1 Antibody (Center) (ABIN1538592 and ABIN2838302) western blot analysis in CEM cell line lysates (35 µg/lane). This demonstrates the VPRES1 antibody detected the VPRES1 protein (arrow).