

Datasheet for ABIN1538602
anti-HHLA3 antibody (AA 75-101)



[Go to Product page](#)

1 Image

Overview

Quantity:	400 µL
Target:	HHLA3
Binding Specificity:	AA 75-101
Reactivity:	Human
Host:	Rabbit
Clonality:	Polyclonal
Conjugate:	This HHLA3 antibody is un-conjugated
Application:	Western Blotting (WB)

Product Details

Immunogen:	This HHLA3 antibody is generated from rabbits immunized with a KLH conjugated synthetic peptide between 75-101 amino acids from the Central region of human HHLA3.
Clone:	RB38268
Isotype:	Ig Fraction
Purification:	This antibody is purified through a protein A column, followed by peptide affinity purification.

Target Details

Target:	HHLA3
Alternative Name:	HHLA3 (HHLA3 Products)
Background:	The function of this protein remains unknown but it may be involved in protein binding. There

Target Details

are 3 isoforms produced by alternative splicing.

Molecular Weight: 12913

Gene ID: 11147

NCBI Accession: [NP_001026863](#), [NP_001031722](#), [NP_001031723](#)

UniProt: [Q9XRX5](#)

Application Details

Application Notes: WB: 1:1000

Restrictions: For Research Use only

Handling

Format: Liquid

Buffer: Purified polyclonal antibody supplied in PBS with 0.09 % (W/V) sodium azide.

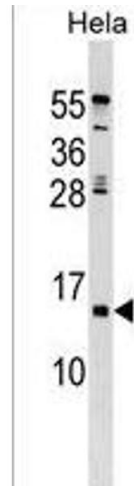
Preservative: Sodium azide

Precaution of Use: This product contains Sodium azide: a POISONOUS AND HAZARDOUS SUBSTANCE which should be handled by trained staff only.

Storage: 4 °C, -20 °C

Storage Comment: HHLA3 Antibody (Center) can be refrigerated at 2-8 °C for up to 6 months. For long term storage, keep at -20 °C.

Expiry Date: 6 months



Western Blotting

Image 1. HHLA3 Antibody (Center) (ABIN1538602 and ABIN2849590) western blot analysis in HeLa cell line lysates (35 µg/lane). This demonstrates the HHLA3 antibody detected the HHLA3 protein (arrow).