

Datasheet for ABIN1538606  
**anti-UBE2V2 antibody (AA 75-104)**[Go to Product page](#)

## 1 Image

## Overview

Quantity:	400 µL
Target:	UBE2V2
Binding Specificity:	AA 75-104
Reactivity:	Human
Host:	Rabbit
Clonality:	Polyclonal
Conjugate:	This UBE2V2 antibody is un-conjugated
Application:	Western Blotting (WB)

## Product Details

Immunogen:	This UBE2V2 antibody is generated from rabbits immunized with a KLH conjugated synthetic peptide between 75-104 amino acids from the Central region of human UBE2V2.
Clone:	RB36808
Isotype:	Ig Fraction
Predicted Reactivity:	B, M, Rat
Purification:	This antibody is purified through a protein A column, followed by peptide affinity purification.

## Target Details

Target:	UBE2V2
Alternative Name:	UBE2V2 ( <a href="#">UBE2V2 Products</a> )

## Target Details

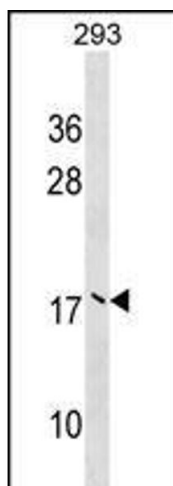
Background:	Ubiquitin-conjugating enzyme E2 variant proteins constitute a distinct subfamily within the E2 protein family. They have sequence similarity to other ubiquitin-conjugating enzymes but lack the conserved cysteine residue that is critical for the catalytic activity of E2s. The protein encoded by this gene also shares homology with ubiquitin-conjugating enzyme E2 variant 1 and yeast MMS2 gene product. It may be involved in the differentiation of monocytes and enterocytes.
Molecular Weight:	16363
Gene ID:	7336
NCBI Accession:	<a href="#">NP_003341</a>
UniProt:	<a href="#">Q15819</a>
Pathways:	<a href="#">Positive Regulation of Response to DNA Damage Stimulus</a>

## Application Details

Application Notes:	WB: 1:1000
Restrictions:	For Research Use only

## Handling

Format:	Liquid
Buffer:	Purified polyclonal antibody supplied in PBS with 0.09 % (W/V) sodium azide.
Preservative:	Sodium azide
Precaution of Use:	This product contains Sodium azide: a POISONOUS AND HAZARDOUS SUBSTANCE which should be handled by trained staff only.
Storage:	4 °C,-20 °C
Storage Comment:	UBE2V2 Antibody (Center) can be refrigerated at 2-8 °C for up to 6 months. For long term storage, keep at -20 °C.
Expiry Date:	6 months



#### Western Blotting

**Image 1.** UBE2V2 Antibody (Center) (ABIN1538606 and ABIN2848850) western blot analysis in 293 cell line lysates (35 µg/lane). This demonstrates the UBE2V2 antibody detected the UBE2V2 protein (arrow).