



[Go to Product page](#)

Datasheet for ABIN1538614  
**anti-TMED1 antibody (AA 77-104)**

1 Image

### Overview

Quantity:	400 µL
Target:	TMED1
Binding Specificity:	AA 77-104
Reactivity:	Human
Host:	Rabbit
Clonality:	Polyclonal
Application:	Western Blotting (WB)

### Product Details

Immunogen:	This TMED1 antibody is generated from rabbits immunized with a KLH conjugated synthetic peptide between 77-104 amino acids from the Central region of human TMED1.
Clone:	RB37763
Isotype:	Ig Fraction
Predicted Reactivity:	B
Purification:	This antibody is purified through a protein A column, followed by peptide affinity purification.

### Target Details

Target:	TMED1
Alternative Name:	TMED1 ( <a href="#">TMED1 Products</a> )
Background:	The protein encoded by this gene was identified by its interaction with interleukin 1 receptor-like

## Target Details

---

1 (IL1RL1). This protein lacks any similarity to other interleukin 1 ligands. The functional significance of its interaction with IL1RL1 is not known.

Molecular Weight: 25206

Gene ID: 11018

NCBI Accession: [NP\\_006849](#)

UniProt: [Q13445](#)

## Application Details

---

Application Notes: WB: 1:1000

Restrictions: For Research Use only

## Handling

---

Format: Liquid

Buffer: Purified polyclonal antibody supplied in PBS with 0.09 % (W/V) sodium azide.

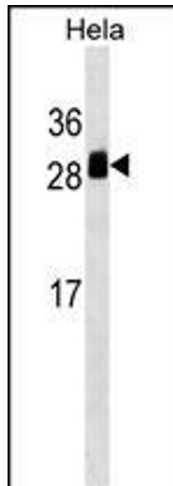
Preservative: Sodium azide

Precaution of Use: This product contains Sodium azide: a POISONOUS AND HAZARDOUS SUBSTANCE which should be handled by trained staff only.

Storage: 4 °C, -20 °C

Storage Comment: TMED1 Antibody (Center) can be refrigerated at 2-8 °C for up to 6 months. For long term storage, keep at -20 °C.

Expiry Date: 6 months



### Western Blotting

**Image 1.** TMED1 Antibody (Center) (ABIN1538614 and ABIN2849286) western blot analysis in HeLa cell line lysates (35 µg/lane). This demonstrates the TMED1 antibody detected the TMED1 protein (arrow).