

Datasheet for ABIN1538618
anti-RPS17L antibody (AA 77-103)



[Go to Product page](#)

1 Image

Overview

| | |
|----------------------|---------------------------------------|
| Quantity: | 400 µL |
| Target: | RPS17L |
| Binding Specificity: | AA 77-103 |
| Reactivity: | Human |
| Host: | Rabbit |
| Clonality: | Polyclonal |
| Conjugate: | This RPS17L antibody is un-conjugated |
| Application: | Western Blotting (WB) |

Product Details

| | |
|-----------------------|--|
| Immunogen: | This RPS17L antibody is generated from rabbits immunized with a KLH conjugated synthetic peptide between 77-103 amino acids from the Central region of human RPS17L. |
| Clone: | RB39782 |
| Isotype: | Ig Fraction |
| Predicted Reactivity: | B, C, Ha, M, Pig, Rat |
| Purification: | This antibody is purified through a protein A column, followed by peptide affinity purification. |

Target Details

| | |
|-------------------|--|
| Target: | RPS17L |
| Alternative Name: | RPS17L (RPS17L Products) |

Target Details

Background: Ribosomes, the organelles that catalyze protein synthesis, consist of a small 40S subunit and a large 60S subunit. Together these subunits are composed of 4 RNA species and approximately 80 structurally distinct proteins. This gene encodes a ribosomal protein that is a component of the 40S subunit. The protein belongs to the S17E family of ribosomal proteins. It is located in the cytoplasm. As is typical for genes encoding ribosomal proteins, there are multiple processed pseudogenes of this gene dispersed through the genome.

Gene ID: 100505503

NCBI Accession: [NP_00101012](#), [NP_001185986](#)

UniProt: [P0CW22](#)

Application Details

Application Notes: WB: 1:1000

Restrictions: For Research Use only

Handling

Format: Liquid

Buffer: Purified polyclonal antibody supplied in PBS with 0.09 % (W/V) sodium azide.

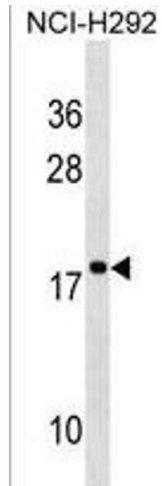
Preservative: Sodium azide

Precaution of Use: This product contains Sodium azide: a POISONOUS AND HAZARDOUS SUBSTANCE which should be handled by trained staff only.

Storage: 4 °C, -20 °C

Storage Comment: RPS17L Antibody (Center) can be refrigerated at 2-8 °C for up to 6 months. For long term storage, keep at -20 °C.

Expiry Date: 6 months



Western Blotting

Image 1. RPS17L Antibody (Center) (ABIN1538618 and ABIN2850519) western blot analysis in NCI- cell line lysates (35 µg/lane). This demonstrates the RPS17L antibody detected the RPS17L protein (arrow).