



Datasheet for ABIN1538624  
**anti-RFESD antibody (AA 78-107)**



[Go to Product page](#)

1 Image

Overview

Quantity:	400 µL
Target:	RFESD
Binding Specificity:	AA 78-107
Reactivity:	Human
Host:	Rabbit
Clonality:	Polyclonal
Conjugate:	This RFESD antibody is un-conjugated
Application:	Western Blotting (WB)

Product Details

Immunogen:	This RFESD antibody is generated from rabbits immunized with a KLH conjugated synthetic peptide between 78-107 amino acids from the Central region of human RFESD.
Clone:	RB30351
Isotype:	Ig Fraction
Predicted Reactivity:	M
Purification:	This antibody is purified through a protein A column, followed by peptide affinity purification.

Target Details

Target:	RFESD
Alternative Name:	RFESD ( <a href="#">RFESD Products</a> )

## Target Details

---

Background:	RFESD contains 1 Rieske domain. The specific function of this protein remains unknown.
Molecular Weight:	17762
Gene ID:	317671
NCBI Accession:	<a href="#">NP_001124537</a> , <a href="#">NP_001124538</a> , <a href="#">NP_775498</a>
UniProt:	<a href="#">Q8TAC1</a>

## Application Details

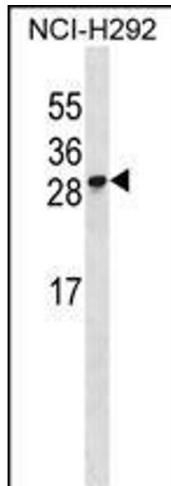
---

Application Notes:	WB: 1:1000
Restrictions:	For Research Use only

## Handling

---

Format:	Liquid
Buffer:	Purified polyclonal antibody supplied in PBS with 0.09 % (W/V) sodium azide.
Preservative:	Sodium azide
Precaution of Use:	This product contains Sodium azide: a POISONOUS AND HAZARDOUS SUBSTANCE which should be handled by trained staff only.
Storage:	4 °C,-20 °C
Storage Comment:	RFESD Antibody (Center) can be refrigerated at 2-8 °C for up to 6 months. For long term storage, keep at -20 °C.
Expiry Date:	6 months



### Western Blotting

**Image 1.** RFESD Antibody (Center) (ABIN1538624 and ABIN2848462) western blot analysis in NCI- cell line lysates (35 µg/lane). This demonstrates the RFESD antibody detected the RFESD protein (arrow).