

Datasheet for ABIN1538626
anti-KIF15 antibody (AA 777-804)[Go to Product page](#)

1 Image

Overview

Quantity:	400 µL
Target:	KIF15
Binding Specificity:	AA 777-804
Reactivity:	Human, Mouse
Host:	Rabbit
Clonality:	Polyclonal
Application:	Western Blotting (WB)

Product Details

Immunogen:	This KIF15 antibody is generated from rabbits immunized with a KLH conjugated synthetic peptide between 777-804 amino acids from the Central region of human KIF15.
Clone:	RB38278
Isotype:	Ig Fraction
Purification:	This antibody is purified through a protein A column, followed by peptide affinity purification.

Target Details

Target:	KIF15
Alternative Name:	KIF15 (KIF15 Products)
Background:	Plus-end directed kinesin-like motor enzyme involved in mitotic spindle assembly (By similarity).
Molecular Weight:	160160

Target Details

Gene ID:	56992
NCBI Accession:	NP_064627
UniProt:	Q9NS87

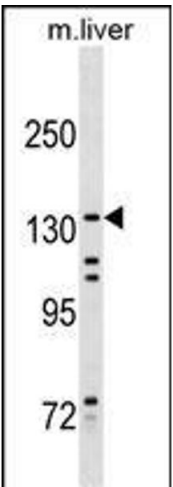
Application Details

Application Notes:	WB: 1:1000
Restrictions:	For Research Use only

Handling

Format:	Liquid
Buffer:	Purified polyclonal antibody supplied in PBS with 0.09 % (W/V) sodium azide.
Preservative:	Sodium azide
Precaution of Use:	This product contains Sodium azide: a POISONOUS AND HAZARDOUS SUBSTANCE which should be handled by trained staff only.
Storage:	4 °C,-20 °C
Storage Comment:	KIF15 Antibody (Center) can be refrigerated at 2-8 °C for up to 6 months. For long term storage, keep at -20 °C.
Expiry Date:	6 months

Images



Western Blotting

Image 1. KIF15 Antibody (Center) (ABIN1538626 and ABIN2849774) western blot analysis in mouse liver tissue lysates (35 µg/lane). This demonstrates the KIF15 antibody detected the KIF15 protein (arrow).