

Datasheet for ABIN1538636
anti-TCF15 antibody (AA 81-107)[Go to Product page](#)

1 Image

Overview

Quantity:	400 µL
Target:	TCF15
Binding Specificity:	AA 81-107
Reactivity:	Human
Host:	Rabbit
Clonality:	Polyclonal
Application:	Western Blotting (WB)

Product Details

Immunogen:	This TCF15 antibody is generated from rabbits immunized with a KLH conjugated synthetic peptide between 81-107 amino acids from the Central region of human TCF15.
Clone:	RB37806
Isotype:	Ig Fraction
Predicted Reactivity:	C, M
Purification:	This antibody is purified through a protein A column, followed by peptide affinity purification.

Target Details

Target:	TCF15
Alternative Name:	TCF15 (TCF15 Products)
Background:	The protein encoded by this gene is found in the nucleus and may be involved in the early

Target Details

transcriptional regulation of patterning of the mesoderm. The encoded basic helix-loop-helix protein requires dimerization with another basic helix-loop-helix protein for efficient DNA binding.

Gene ID: 6939

NCBI Accession: [NP_004600](#)

UniProt: [Q12870](#)

Pathways: [Feeding Behaviour](#)

Application Details

Application Notes: WB: 1:1000

Restrictions: For Research Use only

Handling

Format: Liquid

Buffer: Purified polyclonal antibody supplied in PBS with 0.09 % (W/V) sodium azide.

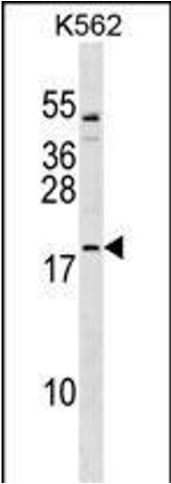
Preservative: Sodium azide

Precaution of Use: This product contains Sodium azide: a POISONOUS AND HAZARDOUS SUBSTANCE which should be handled by trained staff only.

Storage: 4 °C, -20 °C

Storage Comment: TCF15 Antibody (Center) can be refrigerated at 2-8 °C for up to 6 months. For long term storage, keep at -20 °C.

Expiry Date: 6 months



Western Blotting

Image 1. TCF15 Antibody (Center) (ABIN1538636 and ABIN2849746) western blot analysis in K562 cell line lysates (35 µg/lane). This demonstrates the TCF15 antibody detected the TCF15 protein (arrow).