



[Go to Product page](#)

Datasheet for ABIN1538639
anti-MECOM antibody (AA 81-109)

1 Image

Overview

Quantity:	400 µL
Target:	MECOM
Binding Specificity:	AA 81-109
Reactivity:	Mouse
Host:	Rabbit
Clonality:	Polyclonal
Conjugate:	This MECOM antibody is un-conjugated
Application:	Western Blotting (WB)

Product Details

Immunogen:	This MDS1 antibody is generated from rabbits immunized with a KLH conjugated synthetic peptide between 81-109 amino acids from the Central region of human MDS1.
Clone:	RB34340
Isotype:	Ig Fraction
Purification:	This antibody is purified through a protein A column, followed by peptide affinity purification.

Target Details

Target:	MECOM
Alternative Name:	MDS1 (MECOM Products)
Background:	MDS1 is located at 3q26 170-400 kb upstream (telomeric) of EVI1 in the chromosomal region

Target Details

in which some of the breakpoints 5' of EVI1 have been mapped. MDS1 has been identified as a single gene as well as a previously unreported exon (s) of EVI1. MDS1 exists in normal tissues both as a unique transcript and as a normal fusion transcript with EVI1, with an additional 188 codons at the 5' end of the previously reported EVI1 open reading frame. In cells with translocation t (3,21), additional fusion transcripts are AML1-MDS1 and AML1-MDS1-EVI1. EVI1 and MDS1 are involved in leukemia associated with chromosomal translocation breakpoints in the region between these genes.

Gene ID: 2122

NCBI Accession: [NP_004982](#)

UniProt: [Q13465](#)

Application Details

Application Notes: WB: 1:1000

Restrictions: For Research Use only

Handling

Format: Liquid

Buffer: Purified polyclonal antibody supplied in PBS with 0.09 % (W/V) sodium azide.

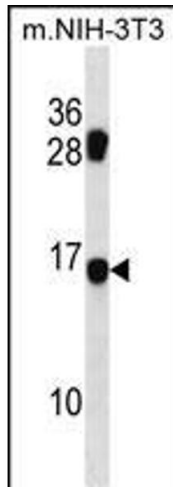
Preservative: Sodium azide

Precaution of Use: This product contains Sodium azide: a POISONOUS AND HAZARDOUS SUBSTANCE which should be handled by trained staff only.

Storage: 4 °C,-20 °C

Storage Comment: MDS1 Antibody (Center) can be refrigerated at 2-8 °C for up to 6 months. For long term storage, keep at -20 °C.

Expiry Date: 6 months



Western Blotting

Image 1. MDS1 Antibody (Center) (ABIN1538639 and ABIN2850509) western blot analysis in mouse NIH-3T3 cell line lysates (35 μ g/lane). This demonstrates the MDS1 antibody detected the MDS1 protein (arrow).