

Datasheet for ABIN1538642  
**anti-HAND2 antibody (AA 81-110)**[Go to Product page](#)

## 2 Images

## Overview

Quantity:	400 µL
Target:	HAND2
Binding Specificity:	AA 81-110
Reactivity:	Human
Host:	Rabbit
Clonality:	Polyclonal
Conjugate:	This HAND2 antibody is un-conjugated
Application:	Western Blotting (WB), Immunofluorescence (IF)

## Product Details

Immunogen:	This HAND2 antibody is generated from rabbits immunized with a KLH conjugated synthetic peptide between 81-110 amino acids from the Central region of human HAND2.
Clone:	RB36759
Isotype:	Ig Fraction
Predicted Reactivity:	C, M, X
Purification:	This antibody is purified through a protein A column, followed by peptide affinity purification.

## Target Details

Target:	HAND2
Alternative Name:	HAND2 ( <a href="#">HAND2 Products</a> )

## Target Details

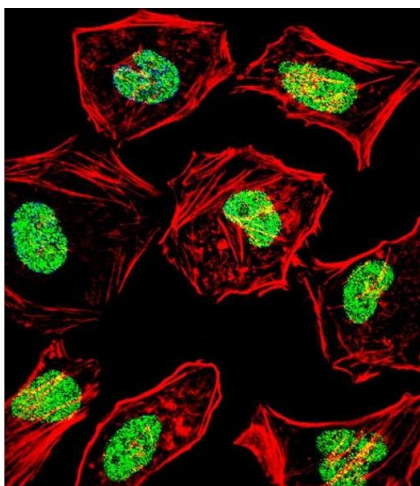
Background:	The protein encoded by this gene belongs to the basic helix-loop-helix family of transcription factors. This gene product is one of two closely related family members, the HAND proteins, which are asymmetrically expressed in the developing ventricular chambers and play an essential role in cardiac morphogenesis. Working in a complementary fashion, they function in the formation of the right ventricle and aortic arch arteries, implicating them as mediators of congenital heart disease. In addition, this transcription factor plays an important role in limb and branchial arch development.
Molecular Weight:	23666
Gene ID:	9464
NCBI Accession:	<a href="#">NP_068808</a>
UniProt:	<a href="#">P61296</a>
Pathways:	<a href="#">Tube Formation</a> , <a href="#">Feeding Behaviour</a>

## Application Details

Application Notes:	IF: 1:10~50. WB: 1:1000
Restrictions:	For Research Use only

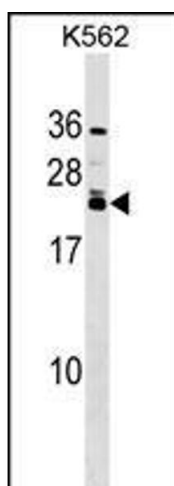
## Handling

Format:	Liquid
Buffer:	Purified polyclonal antibody supplied in PBS with 0.09 % (W/V) sodium azide.
Preservative:	Sodium azide
Precaution of Use:	This product contains Sodium azide: a POISONOUS AND HAZARDOUS SUBSTANCE which should be handled by trained staff only.
Storage:	4 °C,-20 °C
Storage Comment:	HAND2 Antibody (Center) can be refrigerated at 2-8 °C for up to 6 months. For long term storage, keep at -20 °C.
Expiry Date:	6 months



### Immunofluorescence

**Image 1.** Fluorescent confocal image of HeLa cell stained with HAND2 Antibody (Center) (ABIN1538642 and ABIN2848660). HeLa cells were fixed with 4 % PFA (20 min), permeabilized with Triton X-100 (0.1 %, 10 min), then incubated with HAND2 primary antibody (1:25, 1 h at 37 °C). For secondary antibody, Alexa Fluor® 488 conjugated donkey anti-rabbit antibody (green) was used (1:400, 50 min at 37 °C). Cytoplasmic actin was counterstained with Alexa Fluor® 555 (red) conjugated Phalloidin (7 units/mL, 1 h at 37 °C). Nuclei were counterstained with DAPI (blue) (10 µg/mL, 10 min). HAND2 immunoreactivity is localized to Nucleus significantly.



### Western Blotting

**Image 2.** HAND2 Antibody (Center) (ABIN1538642 and ABIN2848660) western blot analysis in K562 cell line lysates (35 µg/lane). This demonstrates the HAND2 antibody detected the HAND2 protein (arrow).