

Datasheet for ABIN1538643
anti-ASB7 antibody (AA 82-108)[Go to Product page](#)

1 Image

Overview

Quantity:	400 µL
Target:	ASB7
Binding Specificity:	AA 82-108
Reactivity:	Human
Host:	Rabbit
Clonality:	Polyclonal
Conjugate:	This ASB7 antibody is un-conjugated
Application:	Western Blotting (WB)

Product Details

Immunogen:	This ASB7 antibody is generated from rabbits immunized with a KLH conjugated synthetic peptide between 82-108 amino acids from the Central region of human ASB7.
Clone:	RB37491
Isotype:	Ig Fraction
Predicted Reactivity:	Pr, M
Purification:	This antibody is purified through a protein A column, followed by peptide affinity purification.

Target Details

Target:	ASB7
Alternative Name:	ASB7 (ASB7 Products)

Target Details

Background: The protein encoded by this gene belongs to a family of ankyrin repeat proteins that, along with four other protein families, contains a C-terminal SOCS box motif. Growing evidence suggests that the SOCS box acts as a bridge between specific substrate-binding domains and the more generic proteins that comprise a large family of E3 ubiquitin protein ligases. In this way, SOCS box containing proteins may regulate protein turnover by targeting proteins for polyubiquitination and, therefore, for proteasome-mediated degradation. Two alternative transcripts encoding different isoforms have been described. [provided by RefSeq].

Molecular Weight: 36011

Gene ID: 140460

NCBI Accession: [NP_078984](#), [NP_937886](#)

UniProt: [Q9H672](#)

Application Details

Application Notes: WB: 1:1000

Restrictions: For Research Use only

Handling

Format: Liquid

Buffer: Purified polyclonal antibody supplied in PBS with 0.09 % (W/V) sodium azide.

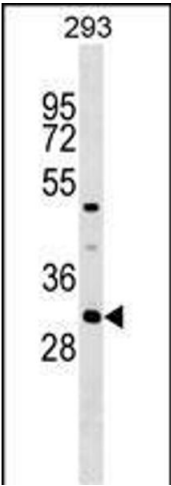
Preservative: Sodium azide

Precaution of Use: This product contains Sodium azide: a POISONOUS AND HAZARDOUS SUBSTANCE which should be handled by trained staff only.

Storage: 4 °C, -20 °C

Storage Comment: ASB7 Antibody (Center) can be refrigerated at 2-8 °C for up to 6 months. For long term storage, keep at -20 °C.

Expiry Date: 6 months



Western Blotting

Image 1. ASB7 Antibody (Center) (ABIN1538643 and ABIN2849554) western blot analysis in 293 cell line lysates (35 µg/lane). This demonstrates the ASB7 antibody detected the ASB7 protein (arrow).