

Datasheet for ABIN1538649  
**anti-NK6 Homeobox 3 antibody (AA 83-109)**[Go to Product page](#)

## 1 Image

## Overview

Quantity:	400 µL
Target:	NK6 Homeobox 3 (NKX6-3)
Binding Specificity:	AA 83-109
Reactivity:	Human
Host:	Rabbit
Clonality:	Polyclonal
Application:	Western Blotting (WB)

## Product Details

Immunogen:	This NKX6-3 antibody is generated from rabbits immunized with a KLH conjugated synthetic peptide between 83-109 amino acids from the Central region of human NKX6-3.
Clone:	RB37730
Isotype:	Ig Fraction
Predicted Reactivity:	M
Purification:	This antibody is purified through a protein A column, followed by peptide affinity purification.

## Target Details

Target:	NK6 Homeobox 3 (NKX6-3)
Alternative Name:	NKX6-3 ( <a href="#">NKX6-3 Products</a> )
Background:	The NKX family of homeodomain proteins controls numerous developmental processes.

## Target Details

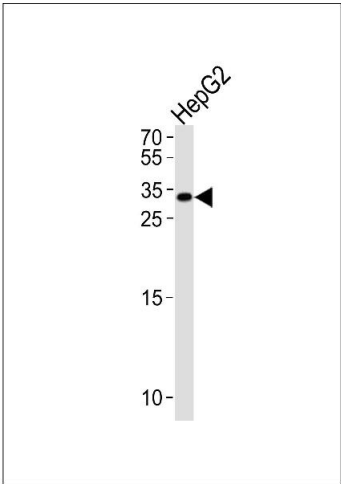
	Members of the NKX6 subfamily, including NKX6-3, are involved in development of the central nervous system (CNS), gastrointestinal tract, and pancreas (Alanentalo et al., 2006 [PubMed 16326147]).
Molecular Weight:	28948
Gene ID:	157848
NCBI Accession:	<a href="#">NP_689781</a>
UniProt:	<a href="#">A6NJ46</a>

## Application Details

Application Notes:	WB: 1:1000
Restrictions:	For Research Use only

## Handling

Format:	Liquid
Buffer:	Purified polyclonal antibody supplied in PBS with 0.09 % (W/V) sodium azide.
Preservative:	Sodium azide
Precaution of Use:	This product contains Sodium azide: a POISONOUS AND HAZARDOUS SUBSTANCE which should be handled by trained staff only.
Storage:	4 °C, -20 °C
Storage Comment:	NKX6-3 Antibody (Center) can be refrigerated at 2-8 °C for up to 6 months. For long term storage, keep at -20 °C.
Expiry Date:	6 months



Western Blotting

**Image 1.** NKX6-3 Antibody (Center) (ABIN1538649 and ABIN2849277) western blot analysis in HepG2 cell line lysates (35 µg/lane). This demonstrates the NKX6-3 antibody detected the NKX6-3 protein (arrow).