



Datasheet for ABIN1538650
anti-RAB17 antibody (AA 83-110)



[Go to Product page](#)

1 Image

Overview

| | |
|----------------------|--------------------------------------|
| Quantity: | 400 µL |
| Target: | RAB17 |
| Binding Specificity: | AA 83-110 |
| Reactivity: | Mouse |
| Host: | Rabbit |
| Clonality: | Polyclonal |
| Conjugate: | This RAB17 antibody is un-conjugated |
| Application: | Western Blotting (WB) |

Product Details

| | |
|---------------|--|
| Immunogen: | This Mouse Rab17 antibody is generated from rabbits immunized with a KLH conjugated synthetic peptide between 83-110 amino acids from the Central region of mouse Rab17. |
| Clone: | RB38657 |
| Isotype: | Ig Fraction |
| Purification: | This antibody is purified through a protein A column, followed by peptide affinity purification. |

Target Details

| | |
|-------------------|---|
| Target: | RAB17 |
| Alternative Name: | Rab17 (RAB17 Products) |
| Background: | Rab17 might be involved in transcellular transport. |

Target Details

| | |
|-------------------|--|
| Molecular Weight: | 23640 |
| Gene ID: | 19329 |
| NCBI Accession: | NP_001153197 , NP_033024 |
| UniProt: | P35292 |

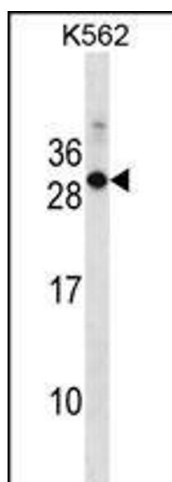
Application Details

| | |
|--------------------|-----------------------|
| Application Notes: | WB: 1:1000 |
| Restrictions: | For Research Use only |

Handling

| | |
|--------------------|--|
| Format: | Liquid |
| Buffer: | Purified polyclonal antibody supplied in PBS with 0.09 % (W/V) sodium azide. |
| Preservative: | Sodium azide |
| Precaution of Use: | This product contains Sodium azide: a POISONOUS AND HAZARDOUS SUBSTANCE which should be handled by trained staff only. |
| Storage: | 4 °C, -20 °C |
| Storage Comment: | Mouse Rab17 Antibody (Center) can be refrigerated at 2-8 °C for up to 6 months. For long term storage, keep at -20 °C. |
| Expiry Date: | 6 months |

Images



Western Blotting

Image 1. Mouse Rab17 Antibody (Center) (ABIN1538650 and ABIN2850148) western blot analysis in K562 cell line lysates (35 µg/lane). This demonstrates the Mouse Rab17 antibody detected the Mouse Rab17 protein (arrow).