

Datasheet for ABIN1538656
anti-RNF122 antibody (AA 84-110)[Go to Product page](#)

1 Image

Overview

Quantity:	400 µL
Target:	RNF122
Binding Specificity:	AA 84-110
Reactivity:	Human
Host:	Rabbit
Clonality:	Polyclonal
Conjugate:	This RNF122 antibody is un-conjugated
Application:	Western Blotting (WB)

Product Details

Immunogen:	This RNF122 antibody is generated from rabbits immunized with a KLH conjugated synthetic peptide between 84-110 amino acids from the Central region of human RNF122.
Clone:	RB37435
Isotype:	Ig Fraction
Predicted Reactivity:	M
Purification:	This antibody is purified through a protein A column, followed by peptide affinity purification.

Target Details

Target:	RNF122
Alternative Name:	RNF122 (RNF122 Products)

Target Details

Background:	The protein encoded by this gene contains a RING finger, a motif present in a variety of functionally distinct proteins and known to be involved in protein-protein and protein-DNA interactions.
-------------	---

Gene ID:	79845
----------	-------

NCBI Accession:	NP_079063
-----------------	---------------------------

UniProt:	Q9H9V4
----------	------------------------

Application Details

Application Notes:	WB: 1:1000
--------------------	------------

Restrictions:	For Research Use only
---------------	-----------------------

Handling

Format:	Liquid
---------	--------

Buffer:	Purified polyclonal antibody supplied in PBS with 0.09 % (W/V) sodium azide.
---------	--

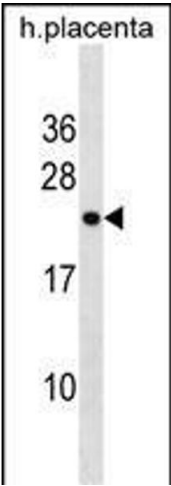
Preservative:	Sodium azide
---------------	--------------

Precaution of Use:	This product contains Sodium azide: a POISONOUS AND HAZARDOUS SUBSTANCE which should be handled by trained staff only.
--------------------	--

Storage:	4 °C,-20 °C
----------	-------------

Storage Comment:	RNF122 Antibody (Center) can be refrigerated at 2-8 °C for up to 6 months. For long term storage, keep at -20 °C.
------------------	---

Expiry Date:	6 months
--------------	----------



Western Blotting

Image 1. RN Antibody (Center) (ABIN1538656 and ABIN2850184) western blot analysis in human placenta tissue lysates (35 µg/lane). This demonstrates the RN antibody detected the RN protein (arrow).