

Datasheet for ABIN1538662
anti-LBX2 antibody (AA 85-113)[Go to Product page](#)

1 Image

Overview

Quantity:	400 µL
Target:	LBX2
Binding Specificity:	AA 85-113
Reactivity:	Human
Host:	Rabbit
Clonality:	Polyclonal
Application:	Western Blotting (WB)

Product Details

Immunogen:	This LBX2 antibody is generated from rabbits immunized with a KLH conjugated synthetic peptide between 85-113 amino acids from the Central region of human LBX2.
Clone:	RB39769
Isotype:	Ig Fraction
Predicted Reactivity:	M
Purification:	This antibody is purified through a protein A column, followed by peptide affinity purification.

Target Details

Target:	LBX2
Alternative Name:	LBX2 (LBX2 Products)
Background:	LBX2 is a putative transcription factor (By similarity).

Target Details

Molecular Weight:	21482
Gene ID:	85474
NCBI Accession:	NP_001009812 , NP_001269359
UniProt:	Q6XYB7

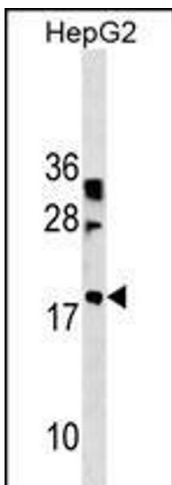
Application Details

Application Notes:	WB: 1:1000
Restrictions:	For Research Use only

Handling

Format:	Liquid
Buffer:	Purified polyclonal antibody supplied in PBS with 0.09 % (W/V) sodium azide.
Preservative:	Sodium azide
Precaution of Use:	This product contains Sodium azide: a POISONOUS AND HAZARDOUS SUBSTANCE which should be handled by trained staff only.
Storage:	4 °C, -20 °C
Storage Comment:	LBX2 Antibody (Center) can be refrigerated at 2-8 °C for up to 6 months. For long term storage, keep at -20 °C.
Expiry Date:	6 months

Images



Western Blotting

Image 1. LBX2 Antibody (Center) (ABIN1538662 and ABIN2838094) western blot analysis in HepG2 cell line lysates (35 µg/lane). This demonstrates the LBX2 antibody detected the LBX2 protein (arrow).