



[Go to Product page](#)

Datasheet for ABIN1538671
anti-OTP antibody (AA 88-115)

1 Image

Overview

Quantity:	400 µL
Target:	OTP
Binding Specificity:	AA 88-115
Reactivity:	Human, Mouse
Host:	Rabbit
Clonality:	Polyclonal
Application:	Western Blotting (WB)

Product Details

Immunogen:	This OTP antibody is generated from rabbits immunized with a KLH conjugated synthetic peptide between 88-115 amino acids from the Central region of human OTP.
Clone:	RB37738
Isotype:	Ig Fraction
Predicted Reactivity:	Zf
Purification:	This antibody is purified through a protein A column, followed by peptide affinity purification.

Target Details

Target:	OTP
Alternative Name:	OTP (OTP Products)
Background:	This gene encodes a member of the homeodomain (HD) family. HD family proteins are helix-

Target Details

turn-helix transcription factors that play key roles in the specification of cell fates. This protein may function during brain development.

Molecular Weight: 34159

Gene ID: 23440

NCBI Accession: [NP_115485](#)

UniProt: [Q5XKR4](#)

Application Details

Application Notes: WB: 1:1000

Restrictions: For Research Use only

Handling

Format: Liquid

Buffer: Purified polyclonal antibody supplied in PBS with 0.09 % (W/V) sodium azide.

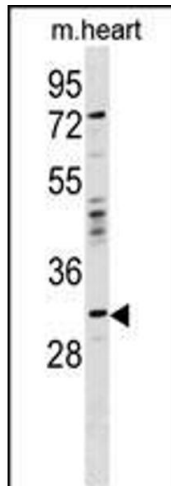
Preservative: Sodium azide

Precaution of Use: This product contains Sodium azide: a POISONOUS AND HAZARDOUS SUBSTANCE which should be handled by trained staff only.

Storage: 4 °C, -20 °C

Storage Comment: OTP Antibody (Center) can be refrigerated at 2-8 °C for up to 6 months. For long term storage, keep at -20 °C.

Expiry Date: 6 months



Western Blotting

Image 1. OTP Antibody (Center) (ABIN1538671 and ABIN2849740) western blot analysis in mouse heart tissue lysates (35 μ g/lane). This demonstrates the OTP antibody detected the OTP protein (arrow).