



[Go to Product page](#)

Datasheet for ABIN1538677
anti-SIX2 antibody (AA 89-119)

1 Image

Overview

Quantity:	400 µL
Target:	SIX2
Binding Specificity:	AA 89-119
Reactivity:	Human
Host:	Rabbit
Clonality:	Polyclonal
Application:	Western Blotting (WB)

Product Details

Immunogen:	This SIX2 antibody is generated from rabbits immunized with a KLH conjugated synthetic peptide between 89-119 amino acids from the Central region of human SIX2.
Clone:	RB37211
Isotype:	Ig Fraction
Predicted Reactivity:	Zf, M, X, D
Purification:	This antibody is purified through a protein A column, followed by peptide affinity purification.

Target Details

Target:	SIX2
Alternative Name:	SIX2 (SIX2 Products)
Background:	This gene is a member of the vertebrate gene family which encode proteins homologous to the

Target Details

Drosophila 'sine oculis' homeobox protein. The encoded protein is a transcription factor which, like other members of this gene family, may be involved in limb or eye development.

Molecular Weight: 32286

Gene ID: 10736

NCBI Accession: [NP_058628](#)

UniProt: [Q9NPC8](#)

Pathways: [Protein targeting to Nucleus](#)

Application Details

Application Notes: WB: 1:1000

Restrictions: For Research Use only

Handling

Format: Liquid

Buffer: Purified polyclonal antibody supplied in PBS with 0.09 % (W/V) sodium azide.

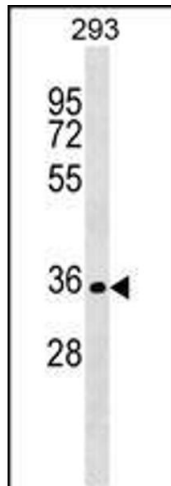
Preservative: Sodium azide

Precaution of Use: This product contains Sodium azide: a POISONOUS AND HAZARDOUS SUBSTANCE which should be handled by trained staff only.

Storage: 4 °C, -20 °C

Storage Comment: SIX2 Antibody (Center) can be refrigerated at 2-8 °C for up to 6 months. For long term storage, keep at -20 °C.

Expiry Date: 6 months



Western Blotting

Image 1. SIX2 Antibody (Center) (ABIN1538677 and ABIN2848966) western blot analysis in 293 cell line lysates (35 µg/lane). This demonstrates the SIX2 antibody detected the SIX2 protein (arrow).