

Datasheet for ABIN1538690  
**anti-CSRP3 antibody (AA 91-119)**[Go to Product page](#)

## 1 Image

## Overview

Quantity:	400 µL
Target:	CSRP3
Binding Specificity:	AA 91-119
Reactivity:	Human
Host:	Rabbit
Clonality:	Polyclonal
Conjugate:	This CSRP3 antibody is un-conjugated
Application:	Western Blotting (WB)

## Product Details

Immunogen:	This CSRP3 antibody is generated from rabbits immunized with a KLH conjugated synthetic peptide between 91-119 amino acids from the Central region of human CSRP3.
Clone:	RB36750
Isotype:	Ig Fraction
Purification:	This antibody is purified through a protein A column, followed by peptide affinity purification.

## Target Details

Target:	CSRP3
Alternative Name:	CSRP3 ( <a href="#">CSRP3 Products</a> )
Background:	This gene encodes a member of the CSRP family of LIM domain proteins, which may be

## Target Details

involved in regulatory processes important for development and cellular differentiation. The LIM/double zinc-finger motif found in this protein is found in a group of proteins with critical functions in gene regulation, cell growth, and somatic differentiation. Mutations in this gene are thought to cause heritable forms of hypertrophic cardiomyopathy (HCM) and dilated cardiomyopathy (DCM) in humans. Alternatively spliced transcript variants with different 5' UTR, but encoding the same protein, have been found for this gene.

Molecular Weight: 20969

Gene ID: 8048

NCBI Accession: [NP\\_003467](#)

UniProt: [P50461](#)

## Application Details

Application Notes: WB: 1:1000

Restrictions: For Research Use only

## Handling

Format: Liquid

Buffer: Purified polyclonal antibody supplied in PBS with 0.09 % (W/V) sodium azide.

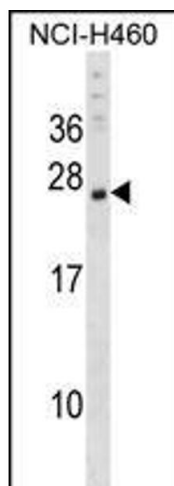
Preservative: Sodium azide

Precaution of Use: This product contains Sodium azide: a POISONOUS AND HAZARDOUS SUBSTANCE which should be handled by trained staff only.

Storage: 4 °C, -20 °C

Storage Comment: CSRP3 Antibody (Center) can be refrigerated at 2-8 °C for up to 6 months. For long term storage, keep at -20 °C.

Expiry Date: 6 months



#### Western Blotting

**Image 1.** CSRP3 Antibody (Center) (ABIN1538690 and ABIN2848656) western blot analysis in NCI- cell line lysates (35 µg/lane). This demonstrates the CSRP3 antibody detected the CSRP3 protein (arrow).