

Datasheet for ABIN1538704
anti-PEF1 antibody (AA 95-121)[Go to Product page](#)

1 Image

Overview

Quantity:	400 µL
Target:	PEF1
Binding Specificity:	AA 95-121
Reactivity:	Human
Host:	Rabbit
Clonality:	Polyclonal
Conjugate:	This PEF1 antibody is un-conjugated
Application:	Western Blotting (WB)

Product Details

Immunogen:	This PEF1 antibody is generated from rabbits immunized with a KLH conjugated synthetic peptide between 95-121 amino acids from the Central region of human PEF1.
Clone:	RB37216
Isotype:	Ig Fraction
Purification:	This antibody is purified through a protein A column, followed by peptide affinity purification.

Target Details

Target:	PEF1
Alternative Name:	PEF1 (PEF1 Products)
Background:	This gene encodes a calcium-binding protein belonging to the penta-EF-hand protein family.

Target Details

The encoded protein has been shown to form a heterodimer with the programmed cell death 6 gene product and may modulate its function in Ca(2+) signaling. Alternative splicing results in multiple transcript variants and a pseudogene has been identified on chromosome 1.

Molecular Weight: 30381

Gene ID: 553115

NCBI Accession: [NP_036524](#)

UniProt: [Q9UBV8](#)

Application Details

Application Notes: WB: 1:1000

Restrictions: For Research Use only

Handling

Format: Liquid

Buffer: Purified polyclonal antibody supplied in PBS with 0.09 % (W/V) sodium azide.

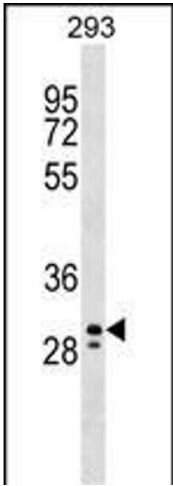
Preservative: Sodium azide

Precaution of Use: This product contains Sodium azide: a POISONOUS AND HAZARDOUS SUBSTANCE which should be handled by trained staff only.

Storage: 4 °C, -20 °C

Storage Comment: PEF1 Antibody (Center) can be refrigerated at 2-8 °C for up to 6 months. For long term storage, keep at -20 °C.

Expiry Date: 6 months



Western Blotting

Image 1. PEF1 Antibody (Center) (ABIN1538704 and ABIN2848970) western blot analysis in 293 cell line lysates (35 µg/lane). This demonstrates the PEF1 antibody detected the PEF1 protein (arrow).