

Datasheet for ABIN1538705
anti-RHOXF2B antibody (AA 95-121)



[Go to Product page](#)

2 Images

Overview

Quantity:	400 µL
Target:	RHOXF2B
Binding Specificity:	AA 95-121
Reactivity:	Human
Host:	Rabbit
Clonality:	Polyclonal
Application:	Western Blotting (WB), Immunofluorescence (IF)

Product Details

Immunogen:	This RHOXF2B antibody is generated from rabbits immunized with a KLH conjugated synthetic peptide between 95-121 amino acids from the Central region of human RHOXF2B.
Clone:	RB39659
Isotype:	Ig Fraction
Purification:	This antibody is purified through a protein A column, followed by peptide affinity purification.

Target Details

Target:	RHOXF2B
Alternative Name:	RHOXF2B (RHOXF2B Products)
Background:	The function of this protein remains unknown.
Molecular Weight:	31637

Target Details

Gene ID: 727940

NCBI Accession: [NP_001093155](#)

UniProt: [P0C7M4](#)

Application Details

Application Notes: IF: 1:10~50. WB: 1:1000

Restrictions: For Research Use only

Handling

Format: Liquid

Buffer: Purified polyclonal antibody supplied in PBS with 0.09 % (W/V) sodium azide.

Preservative: Sodium azide

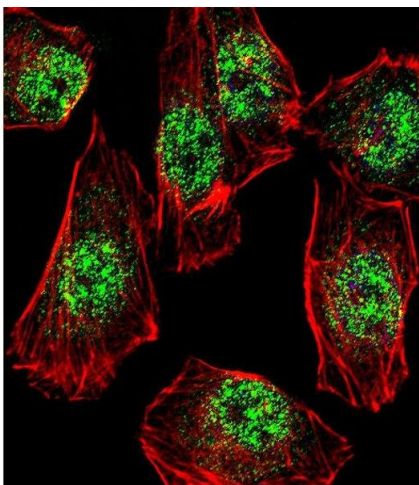
Precaution of Use: This product contains Sodium azide: a POISONOUS AND HAZARDOUS SUBSTANCE which should be handled by trained staff only.

Storage: 4 °C, -20 °C

Storage Comment: RHOXF2B Antibody (Center) can be refrigerated at 2-8 °C for up to 6 months. For long term storage, keep at -20 °C.

Expiry Date: 6 months

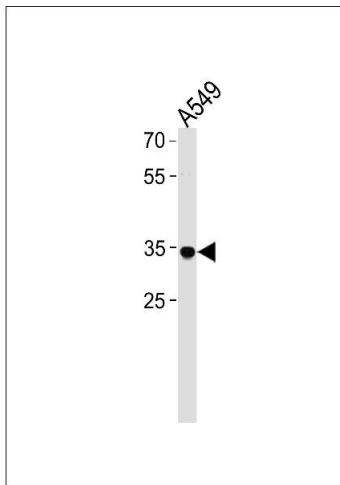
Images



Immunofluorescence

Image 1. Fluorescent confocal image of A549 cell stained with RHOXF2B Antibody (Center) (ABIN1538705 and ABIN2838200). A549 cells were fixed with 4 % PFA (20 min), permeabilized with Triton X-100 (0.1 %, 10 min), then incubated with RHOXF2B primary antibody (1:25, 1 h at 37 °C). For secondary antibody, Alexa Fluor® 488 conjugated donkey anti-rabbit antibody (green) was used (1:400, 50 min at 37 °C). Cytoplasmic actin was counterstained with Alexa Fluor® 555 (red) conjugated

Phalloidin (7 units/mL, 1 h at 37 °C). Nuclei were counterstained with DAPI (blue) (10 µg/mL, 10 min). RHOXF2B immunoreactivity is localized to Nucleus significantly.



Western Blotting

Image 2. RHOXF2B Antibody (Center) (ABIN1538705 and ABIN2838200) western blot analysis in A549 cell line lysates (35 µg/lane). This demonstrates the RHOXF2B antibody detected the RHOXF2B protein (arrow).