

Datasheet for ABIN1538707

**anti-ALX1 antibody (AA 97-122)**[Go to Product page](#)**1** Image

## Overview

Quantity:	400 µL
Target:	ALX1
Binding Specificity:	AA 97-122
Reactivity:	Human
Host:	Rabbit
Clonality:	Polyclonal
Conjugate:	This ALX1 antibody is un-conjugated
Application:	Western Blotting (WB)

## Product Details

Immunogen:	This ALX1 antibody is generated from rabbits immunized with a KLH conjugated synthetic peptide between 97-122 amino acids from the Central region of human ALX1.
Clone:	RB37559
Isotype:	Ig Fraction
Purification:	This antibody is purified through a protein A column, followed by peptide affinity purification.

## Target Details

Target:	ALX1
Alternative Name:	ALX1 ( <a href="#">ALX1 Products</a> )
Background:	The specific function of this gene has yet to be determined in humans, however, in rodents, it is

## Target Details

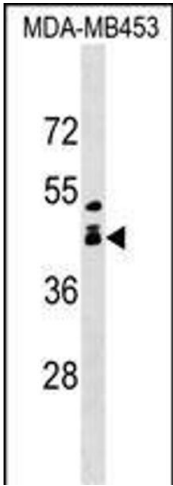
	necessary for survival of the forebrain mesenchyme and may also be involved in development of the cervix. Mutations in the mouse gene lead to neural tube defects such as acrania and meroanencephaly. [provided by RefSeq].
Molecular Weight:	36961
Gene ID:	8092
NCBI Accession:	<a href="#">NP_008913</a>
UniProt:	<a href="#">Q15699</a>
Pathways:	<a href="#">Tube Formation</a>

## Application Details

Application Notes:	WB: 1:1000
Restrictions:	For Research Use only

## Handling

Format:	Liquid
Buffer:	Purified polyclonal antibody supplied in PBS with 0.09 % (W/V) sodium azide.
Preservative:	Sodium azide
Precaution of Use:	This product contains Sodium azide: a POISONOUS AND HAZARDOUS SUBSTANCE which should be handled by trained staff only.
Storage:	4 °C,-20 °C
Storage Comment:	ALX1 Antibody (Center) can be refrigerated at 2-8 °C for up to 6 months. For long term storage, keep at -20 °C.
Expiry Date:	6 months



Western Blotting

**Image 1.** ALX1 Antibody (Center) (ABIN1538707 and ABIN2849356) western blot analysis in MDA-M cell line lysates (35 µg/lane). This demonstrates the ALX1 antibody detected the ALX1 protein (arrow).