

Datasheet for ABIN1538708  
**anti-THOC6 antibody (AA 96-123)**[Go to Product page](#)

## 1 Image

## Overview

Quantity:	400 µL
Target:	THOC6
Binding Specificity:	AA 96-123
Reactivity:	Human, Mouse
Host:	Rabbit
Clonality:	Polyclonal
Conjugate:	This THOC6 antibody is un-conjugated
Application:	Western Blotting (WB)

## Product Details

Immunogen:	This THOC6 antibody is generated from rabbits immunized with a KLH conjugated synthetic peptide between 96-123 amino acids from the Central region of human THOC6.
Clone:	RB38031
Isotype:	Ig Fraction
Predicted Reactivity:	Rat
Purification:	This antibody is purified through a protein A column, followed by peptide affinity purification.

## Target Details

Target:	THOC6
Alternative Name:	THOC6 ( <a href="#">THOC6 Products</a> )

## Target Details

**Background:** Component of the THO subcomplex of the TREX complex. The TREX complex specifically associates with spliced mRNA and not with unspliced pre-mRNA. It is recruited to spliced mRNAs by a transcription-independent mechanism. Binds to mRNA upstream of the exon-junction complex (EJC) and is recruited in a splicing-and cap-dependent manner to a region near the 5' end of the mRNA where it functions in mRNA export. The recruitment occurs via an interaction between THOC4 and the cap-binding protein NCBP1. UAP56 functions as a bridge between THOC4 and the THO complex. The TREX complex is essential for the export of Kaposi's sarcoma-associated herpesvirus (KSHV) intronless mRNAs and infectious virus production. The recruitment of the TREX complex to the intronless viral mRNA occurs via an interaction between KSHV ORF57 protein and THOC4.

**Molecular Weight:** 37535

**Gene ID:** 79228

**NCBI Accession:** [NP\\_001135822](#), [NP\\_077315](#)

**UniProt:** [Q86W42](#)

## Application Details

**Application Notes:** WB: 1:1000

**Restrictions:** For Research Use only

## Handling

**Format:** Liquid

**Buffer:** Purified polyclonal antibody supplied in PBS with 0.09 % (W/V) sodium azide.

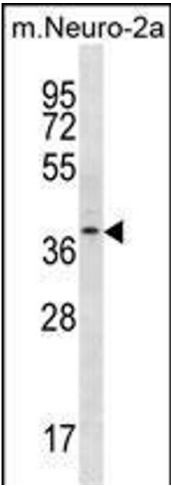
**Preservative:** Sodium azide

**Precaution of Use:** This product contains Sodium azide: a POISONOUS AND HAZARDOUS SUBSTANCE which should be handled by trained staff only.

**Storage:** 4 °C, -20 °C

**Storage Comment:** THOC6 Antibody (Center) can be refrigerated at 2-8 °C for up to 6 months. For long term storage, keep at -20 °C.

**Expiry Date:** 6 months



Western Blotting

**Image 1.** THOC6 Antibody (Center) (ABIN1538708 and ABIN2850061) western blot analysis in mouse Neuro-2a cell line lysates (35 µg/lane). This demonstrates the THOC6 antibody detected the THOC6 protein (arrow).