



[Go to Product page](#)

Datasheet for ABIN1538709  
**anti-MYL6B antibody (AA 96-123)**

1 Image

Overview

Quantity:	400 µL
Target:	MYL6B
Binding Specificity:	AA 96-123
Reactivity:	Human
Host:	Rabbit
Clonality:	Polyclonal
Conjugate:	This MYL6B antibody is un-conjugated
Application:	Western Blotting (WB)

Product Details

Immunogen:	This MYL6B antibody is generated from rabbits immunized with a KLH conjugated synthetic peptide between 96-123 amino acids from the Central region of human MYL6B.
Clone:	RB37348
Isotype:	Ig Fraction
Purification:	This antibody is purified through a protein A column, followed by peptide affinity purification.

Target Details

Target:	MYL6B
Alternative Name:	MYL6B ( <a href="#">MYL6B Products</a> )
Background:	Myosin is a hexameric ATPase cellular motor protein. It is composed of two heavy chains, two

## Target Details

---

nonphosphorylatable alkali light chains, and two phosphorylatable regulatory light chains. This gene encodes a myosin alkali light chain expressed in both slow-twitch skeletal muscle and in nonmuscle tissue.

Molecular Weight:	22764
Gene ID:	140465
NCBI Accession:	<a href="#">NP_001186558</a> , <a href="#">NP_002466</a>
UniProt:	<a href="#">P14649</a>

## Application Details

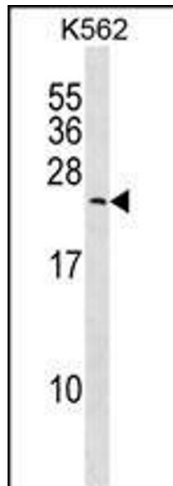
---

Application Notes:	WB: 1:1000
Restrictions:	For Research Use only

## Handling

---

Format:	Liquid
Buffer:	Purified polyclonal antibody supplied in PBS with 0.09 % (W/V) sodium azide.
Preservative:	Sodium azide
Precaution of Use:	This product contains Sodium azide: a POISONOUS AND HAZARDOUS SUBSTANCE which should be handled by trained staff only.
Storage:	4 °C, -20 °C
Storage Comment:	MYL6B Antibody (Center) can be refrigerated at 2-8 °C for up to 6 months. For long term storage, keep at -20 °C.
Expiry Date:	6 months



### Western Blotting

**Image 1.** MYL6B Antibody (Center) (ABIN1538709 and ABIN2850105) western blot analysis in K562 cell line lysates (35 µg/lane). This demonstrates the MYL6B antibody detected the MYL6B protein (arrow).