

Datasheet for ABIN1538711
anti-SIX Homeobox 6 antibody (AA 96-124)[Go to Product page](#)

1 Image

Overview

| | |
|----------------------|-----------------------|
| Quantity: | 400 µL |
| Target: | SIX Homeobox 6 (SIX6) |
| Binding Specificity: | AA 96-124 |
| Reactivity: | Human, Mouse |
| Host: | Rabbit |
| Clonality: | Polyclonal |
| Application: | Western Blotting (WB) |

Product Details

| | |
|-----------------------|--|
| Immunogen: | This SIX6 antibody is generated from rabbits immunized with a KLH conjugated synthetic peptide between 96-124 amino acids from the Central region of human SIX6. |
| Clone: | RB36917 |
| Isotype: | Ig Fraction |
| Predicted Reactivity: | C |
| Purification: | This antibody is purified through a protein A column, followed by peptide affinity purification. |

Target Details

| | |
|-------------------|--|
| Target: | SIX Homeobox 6 (SIX6) |
| Alternative Name: | SIX6 (SIX6 Products) |
| Background: | The protein encoded by this gene is a homeobox protein that is similar to the Drosophila 'sine |

Target Details

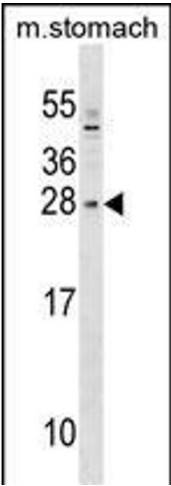
| | |
|-------------------|---|
| | oculis' gene product. This gene is found in a cluster of related genes on chromosome 14 and is thought to be involved in eye development. Defects in this gene are a cause of isolated microphthalmia with cataract type 2 (MCOPCT2). |
| Molecular Weight: | 27687 |
| Gene ID: | 4990 |
| NCBI Accession: | NP_031400 |
| UniProt: | O95475 |

Application Details

| | |
|--------------------|-----------------------|
| Application Notes: | WB: 1:1000 |
| Restrictions: | For Research Use only |

Handling

| | |
|--------------------|--|
| Format: | Liquid |
| Buffer: | Purified polyclonal antibody supplied in PBS with 0.09 % (W/V) sodium azide. |
| Preservative: | Sodium azide |
| Precaution of Use: | This product contains Sodium azide: a POISONOUS AND HAZARDOUS SUBSTANCE which should be handled by trained staff only. |
| Storage: | 4 °C,-20 °C |
| Storage Comment: | SIX6 Antibody (Center) can be refrigerated at 2-8 °C for up to 6 months. For long term storage, keep at -20 °C. |
| Expiry Date: | 6 months |



Western Blotting

Image 1. SIX6 Antibody (Center) (ABIN1538711 and ABIN2849339) western blot analysis in mouse stomach tissue lysates (35 µg/lane). This demonstrates the SIX6 antibody detected the SIX6 protein (arrow).