



[Go to Product page](#)

Datasheet for ABIN1538712  
**anti-PDCD10 antibody (AA 96-124)**

1 Image

Overview

Quantity:	400 µL
Target:	PDCD10
Binding Specificity:	AA 96-124
Reactivity:	Human
Host:	Rabbit
Clonality:	Polyclonal
Conjugate:	This PDCD10 antibody is un-conjugated
Application:	Western Blotting (WB)

Product Details

Immunogen:	This PDCD10 antibody is generated from rabbits immunized with a KLH conjugated synthetic peptide between 96-124 amino acids from the Central region of human PDCD10.
Clone:	RB21118
Isotype:	Ig Fraction
Predicted Reactivity:	Zf, C, M, Rat, X
Purification:	This antibody is purified through a protein A column, followed by peptide affinity purification.

Target Details

Target:	PDCD10
Alternative Name:	PDCD10 ( <a href="#">PDCD10 Products</a> )

## Target Details

---

**Background:** This gene encodes an evolutionarily conserved protein associated with cell apoptosis. The protein interacts with the serine/threonine protein kinase MST4 to modulate the extracellular signal-regulated kinase (ERK) pathway. It also interacts with and is phosphorylated by serine/threonine kinase 25, and is thought to function in a signaling pathway essential for vascular development. Mutations in this gene are one cause of cerebral cavernous malformations, which are vascular malformations that cause seizures and cerebral hemorrhages. Multiple alternatively spliced variants, encoding the same protein, have been identified. [provided by RefSeq].

---

**Molecular Weight:** 24702

---

**Gene ID:** 11235

---

**NCBI Accession:** [NP\\_009148](#), [NP\\_665858](#), [NP\\_665859](#)

---

**UniProt:** [Q9BUL8](#)

## Application Details

---

**Application Notes:** WB: 1:1000

---

**Restrictions:** For Research Use only

## Handling

---

**Format:** Liquid

---

**Buffer:** Purified polyclonal antibody supplied in PBS with 0.09 % (W/V) sodium azide.

---

**Preservative:** Sodium azide

---

**Precaution of Use:** This product contains Sodium azide: a POISONOUS AND HAZARDOUS SUBSTANCE which should be handled by trained staff only.

---

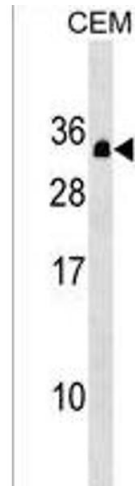
**Storage:** 4 °C,-20 °C

---

**Storage Comment:** PDCD10 Antibody (Center) can be refrigerated at 2-8 °C for up to 6 months. For long term storage, keep at -20 °C.

---

**Expiry Date:** 6 months



### Western Blotting

**Image 1.** PDCD10 Antibody (Center) (ABIN1538712 and ABIN2849495) western blot analysis in CEM cell line lysates (35 µg/lane). This demonstrates the PDCD10 antibody detected the PDCD10 protein (arrow).