

Datasheet for ABIN1538713
anti-BPHL antibody (AA 96-124)[Go to Product page](#)

1 Image

Overview

Quantity:	400 µL
Target:	BPHL
Binding Specificity:	AA 96-124
Reactivity:	Human
Host:	Rabbit
Clonality:	Polyclonal
Conjugate:	This BPHL antibody is un-conjugated
Application:	Western Blotting (WB)

Product Details

Immunogen:	This BPHL antibody is generated from rabbits immunized with a KLH conjugated synthetic peptide between 96-124 amino acids from the Central region of human BPHL.
Clone:	RB34006
Isotype:	Ig Fraction
Purification:	This antibody is purified through a protein A column, followed by peptide affinity purification.

Target Details

Target:	BPHL
Alternative Name:	BPHL (BPHL Products)
Background:	This gene encodes a member of the serine protease family of hydrolytic enzymes which

Target Details

contain a serine in their active site. The encoded protein may play a role in activation of the antiviral prodrug valacyclovir. Alternatively spliced transcript variants have been described.

Molecular Weight: 32543

Gene ID: 670

NCBI Accession: [NP_004323](#)

UniProt: [Q86WA6](#)

Application Details

Application Notes: WB: 1:1000

Restrictions: For Research Use only

Handling

Format: Liquid

Buffer: Purified polyclonal antibody supplied in PBS with 0.09 % (W/V) sodium azide.

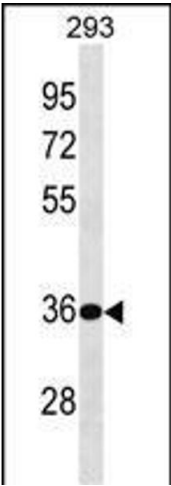
Preservative: Sodium azide

Precaution of Use: This product contains Sodium azide: a POISONOUS AND HAZARDOUS SUBSTANCE which should be handled by trained staff only.

Storage: 4 °C,-20 °C

Storage Comment: BPHL Antibody (Center) can be refrigerated at 2-8 °C for up to 6 months. For long term storage, keep at -20 °C.

Expiry Date: 6 months



Western Blotting

Image 1. BPHL Antibody (Center) (ABIN1538713 and ABIN2849725) western blot analysis in 293 cell line lysates (35 µg/lane). This demonstrates the BPHL antibody detected the BPHL protein (arrow).