

Datasheet for ABIN1538715
anti-MS4A3 antibody (AA 97-123)[Go to Product page](#)

1 Image

Overview

Quantity:	400 µL
Target:	MS4A3
Binding Specificity:	AA 97-123
Reactivity:	Human
Host:	Rabbit
Clonality:	Polyclonal
Conjugate:	This MS4A3 antibody is un-conjugated
Application:	Western Blotting (WB)

Product Details

Immunogen:	This MS4A3 antibody is generated from rabbits immunized with a KLH conjugated synthetic peptide between 97-123 amino acids from the Central region of human MS4A3.
Clone:	RB37599
Isotype:	Ig Fraction
Purification:	This antibody is purified through a protein A column, followed by peptide affinity purification.

Target Details

Target:	MS4A3
Alternative Name:	MS4A3 (MS4A3 Products)
Background:	This gene encodes a member of the membrane-spanning 4A gene family. Members of this

Target Details

protein family are characterized by common structural features and similar intron/exon splice boundaries and display unique expression patterns among hematopoietic cells and nonlymphoid tissues. This family member likely plays a role in signal transduction and may function as a subunit associated with receptor complexes. The gene encoding this protein is localized to 11q12, among a cluster of related family members. Alternative splicing may result in multiple transcript variants, however, not all variants have been fully described.

Molecular Weight: 22933

Gene ID: 932

NCBI Accession: [NP_001026836](#), [NP_001026979](#), [NP_006129](#)

UniProt: [Q96HJ5](#)

Application Details

Application Notes: WB: 1:1000

Restrictions: For Research Use only

Handling

Format: Liquid

Buffer: Purified polyclonal antibody supplied in PBS with 0.09 % (W/V) sodium azide.

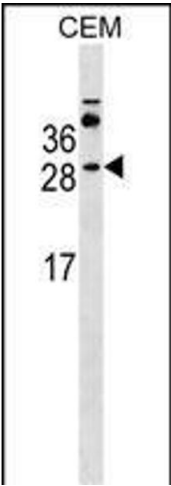
Preservative: Sodium azide

Precaution of Use: This product contains Sodium azide: a POISONOUS AND HAZARDOUS SUBSTANCE which should be handled by trained staff only.

Storage: 4 °C, -20 °C

Storage Comment: MS4A3 Antibody (Center) can be refrigerated at 2-8 °C for up to 6 months. For long term storage, keep at -20 °C.

Expiry Date: 6 months



Western Blotting

Image 1. MS4A3 Antibody (Center) (ABIN1538715 and ABIN2849560) western blot analysis in CEM cell line lysates (35 µg/lane). This demonstrates the MS4A3 antibody detected the MS4A3 protein (arrow).