

Datasheet for ABIN1538717
anti-CIDEDEC antibody (AA 97-126)[Go to Product page](#)

1 Image

Overview

Quantity:	400 µL
Target:	CIDEDEC
Binding Specificity:	AA 97-126
Reactivity:	Human
Host:	Rabbit
Clonality:	Polyclonal
Conjugate:	This CIDEDEC antibody is un-conjugated
Application:	Western Blotting (WB)

Product Details

Immunogen:	This CIDEDEC antibody is generated from rabbits immunized with a KLH conjugated synthetic peptide between 97-126 amino acids from the Central region of human CIDEDEC.
Clone:	RB37839
Isotype:	Ig Fraction
Purification:	This antibody is purified through a protein A column, followed by peptide affinity purification.

Target Details

Target:	CIDEDEC
Alternative Name:	CIDEDEC (CIDEDEC Products)
Background:	DNA fragmentation factor (DFF) induces the fragmentation of DNA associated with apoptosis.

Target Details

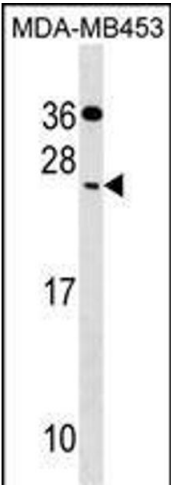
	A novel family of cell death-inducing DFF45 (MIM 601882)-like effectors (CIDEs), including CIDEc, can also promote apoptosis (Liang et al., 2003 [PubMed 12429024]).
Molecular Weight:	26754
Gene ID:	63924
NCBI Accession:	NP_001186480 , NP_001186481 , NP_001186552 , NP_071377
UniProt:	Q96AQ7

Application Details

Application Notes:	WB: 1:1000
Restrictions:	For Research Use only

Handling

Format:	Liquid
Buffer:	Purified polyclonal antibody supplied in PBS with 0.09 % (W/V) sodium azide.
Preservative:	Sodium azide
Precaution of Use:	This product contains Sodium azide: a POISONOUS AND HAZARDOUS SUBSTANCE which should be handled by trained staff only.
Storage:	4 °C,-20 °C
Storage Comment:	CIDEc Antibody (Center) can be refrigerated at 2-8 °C for up to 6 months. For long term storage, keep at -20 °C.
Expiry Date:	6 months



Western Blotting

Image 1. CIDEA Antibody (Center) (ABIN1538717 and ABIN2849747) western blot analysis in MDA-M cell line lysates (35 µg/lane). This demonstrates the CIDEA antibody detected the CIDEA protein (arrow).