



[Go to Product page](#)

Datasheet for ABIN1538723
anti-TRIM antibody (AA 98-127)

2 Images

Overview

Quantity:	400 µL
Target:	TRIM (TRAT1)
Binding Specificity:	AA 98-127
Reactivity:	Human, Mouse
Host:	Rabbit
Clonality:	Polyclonal
Application:	Western Blotting (WB)

Product Details

Immunogen:	This TRAT1 antibody is generated from rabbits immunized with a KLH conjugated synthetic peptide between 98-127 amino acids from the Central region of human TRAT1.
Clone:	RB30370
Isotype:	Ig Fraction
Purification:	This antibody is purified through a protein A column, followed by peptide affinity purification.

Target Details

Target:	TRIM (TRAT1)
Alternative Name:	TRAT1 (TRAT1 Products)
Background:	TRAT1 stabilizes the TCR (T-cell antigen receptor)/CD3 complex at the surface of T-cells.
Molecular Weight:	21211

Target Details

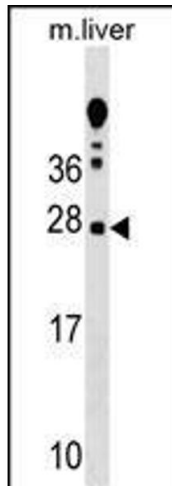
Gene ID:	50852
NCBI Accession:	NP_057472
UniProt:	Q6PIZ9
Pathways:	TCR Signaling , Fc-epsilon Receptor Signaling Pathway , EGFR Signaling Pathway , Neurotrophin Signaling Pathway

Application Details

Application Notes:	WB: 1:1000. WB: 1:1000
Restrictions:	For Research Use only

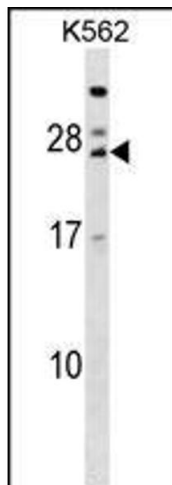
Handling

Format:	Liquid
Buffer:	Purified polyclonal antibody supplied in PBS with 0.09 % (W/V) sodium azide.
Preservative:	Sodium azide
Precaution of Use:	This product contains Sodium azide: a POISONOUS AND HAZARDOUS SUBSTANCE which should be handled by trained staff only.
Storage:	4 °C,-20 °C
Storage Comment:	TRAT1 Antibody (Center) can be refrigerated at 2-8 °C for up to 6 months. For long term storage, keep at -20 °C.
Expiry Date:	6 months



Western Blotting

Image 1. TRAT1 Antibody (Center) (ABIN1538723 and ABIN2848787) western blot analysis in mouse liver tissue lysates (35 µg/lane). This demonstrates the TRAT1 antibody detected the TRAT1 protein (arrow).



Western Blotting

Image 2. TRAT1 Antibody (Center) (ABIN1538723 and ABIN2848787) western blot analysis in K562 cell line lysates (35 µg/lane). This demonstrates the TRAT1 antibody detected the TRAT1 protein (arrow).