

Datasheet for ABIN1538738

anti-ZWINT antibody[Go to Product page](#)**1** Image

Overview

Quantity:	0.1 mL
Target:	ZWINT
Reactivity:	Human, Mouse
Host:	Mouse
Clonality:	Monoclonal
Application:	Western Blotting (WB)

Product Details

Immunogen:	Purified His-tagged ZWINT protein(Fragment) was used to produced this monoclonal antibody.
Clone:	422CT4-6-4
Isotype:	IgM
Purification:	Mouse monoclonal antibody supplied in crude ascites with 0.09% (W/V) sodium azide.

Target Details

Target:	ZWINT
Alternative Name:	ZWINT (ZWINT Products)
Background:	This gene encodes a protein that is clearly involved in kinetochore function although an exact role is not known. It interacts with ZW10, another kinetochore protein, possibly regulating the association between ZW10 and kinetochores. The encoded protein localizes to prophase kinetochores before ZW10 does and it remains detectable on the kinetochore until late anaphase. It has a uniform distribution in the cytoplasm of interphase cells. Alternatively

Target Details

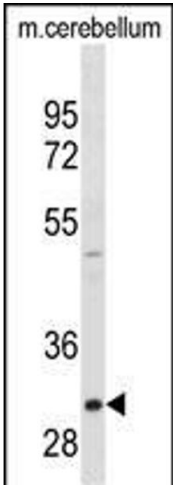
	spliced transcript variants encoding different isoforms have been found for this gene.
Molecular Weight:	31293
Gene ID:	11130
NCBI Accession:	NP_001005413 , NP_008988 , NP_127490
UniProt:	O95229

Application Details

Application Notes:	WB: 1:500~4000
Restrictions:	For Research Use only

Handling

Format:	Liquid
Buffer:	Mouse monoclonal antibody supplied in crude ascites with 0.09 % (W/V) sodium azide.
Preservative:	Sodium azide
Precaution of Use:	This product contains Sodium azide: a POISONOUS AND HAZARDOUS SUBSTANCE which should be handled by trained staff only.
Storage:	4 °C,-20 °C
Storage Comment:	ZWINT Antibody(Ascites) can be refrigerated at 2-8 °C for up to 6 months. For long term storage, keep at -20 °C.
Expiry Date:	6 months



Western Blotting

Image 1. ZWINT Antibody ABIN1538738 western blot analysis in mouse cerebellum tissue lysates (35 μ g/lane). This demonstrates the ZWINT antibody detected the ZWINT protein (arrow).