

Datasheet for ABIN1538807  
**anti-MOBKL3 antibody (N-Term)**[Go to Product page](#)

## 1 Image

## Overview

Quantity:	400 µL
Target:	MOBKL3
Binding Specificity:	AA 1-30, N-Term
Reactivity:	Human
Host:	Rabbit
Clonality:	Polyclonal
Conjugate:	This MOBKL3 antibody is un-conjugated
Application:	Western Blotting (WB)

## Product Details

Immunogen:	This MOBKL3 antibody is generated from rabbits immunized with a KLH conjugated synthetic peptide between 1-30 amino acids from the N-terminal region of human MOBKL3.
Clone:	RB32433
Isotype:	Ig Fraction
Predicted Reactivity:	C, M, Rat
Purification:	This antibody is purified through a protein A column, followed by peptide affinity purification.

## Target Details

Target:	MOBKL3
Alternative Name:	MOBKL3 ( <a href="#">MOBKL3 Products</a> )

## Target Details

**Background:** This gene was identified based on its similarity with the mouse counterpart. Studies of the mouse counterpart suggest that the expression of this gene may be regulated during oocyte maturation and preimplantation following zygotic gene activation. Alternatively spliced transcript variants encoding distinct isoforms have been observed.

**Molecular Weight:** 26032

**Gene ID:** 25843

**NCBI Accession:** [NP\\_001094289](#), [NP\\_001191023](#), [NP\\_056202](#), [NP\\_955776](#)

**UniProt:** [Q9Y3A3](#)

## Application Details

**Application Notes:** WB: 1:1000

**Restrictions:** For Research Use only

## Handling

**Format:** Liquid

**Buffer:** Purified polyclonal antibody supplied in PBS with 0.09 % (W/V) sodium azide.

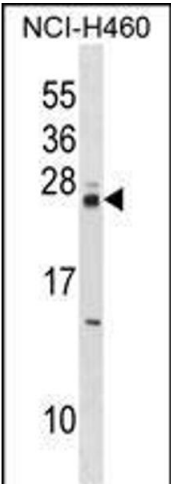
**Preservative:** Sodium azide

**Precaution of Use:** This product contains Sodium azide: a POISONOUS AND HAZARDOUS SUBSTANCE which should be handled by trained staff only.

**Storage:** 4 °C, -20 °C

**Storage Comment:** MOBKL3 Antibody (N-term) can be refrigerated at 2-8 °C for up to 6 months. For long term storage, keep at -20 °C.

**Expiry Date:** 6 months



Western Blotting

**Image 1.** MOBKL3 Antibody (N-term) (ABIN1538807 and ABIN2848562) western blot analysis in NCI- cell line lysates (35 µg/lane). This demonstrates the MOBKL3 antibody detected the MOBKL3 protein (arrow).