

Datasheet for ABIN1538808
anti-MOBKL2B antibody (N-Term)[Go to Product page](#)

1 Image

Overview

Quantity:	400 µL
Target:	MOBKL2B (MOB3B)
Binding Specificity:	AA 1-30, N-Term
Reactivity:	Human, Mouse
Host:	Rabbit
Clonality:	Polyclonal
Conjugate:	This MOBKL2B antibody is un-conjugated
Application:	Western Blotting (WB)

Product Details

Immunogen:	This MOL2B antibody is generated from rabbits immunized with a KLH conjugated synthetic peptide between 1-30 amino acids from the N-terminal region of human MOL2B.
Clone:	RB32715
Isotype:	Ig Fraction
Purification:	This antibody is purified through a protein A column, followed by peptide affinity purification.

Target Details

Target:	MOBKL2B (MOB3B)
Abstract:	MOB3B Products
Background:	The protein encoded by this gene shares similarity with the yeast Mob1 protein. Yeast Mob1

Target Details

binds Mps1p, a protein kinase essential for spindle pole body duplication and mitotic checkpoint regulation. This gene is located on the opposite strand as the interferon kappa precursor (IFNK) gene.

Molecular Weight: 25464

Gene ID: 79817

NCBI Accession: [NP_079037](#)

UniProt: [Q86TA1](#)

Application Details

Application Notes: WB: 1:1000

Restrictions: For Research Use only

Handling

Format: Liquid

Buffer: Purified polyclonal antibody supplied in PBS with 0.09 % (W/V) sodium azide.

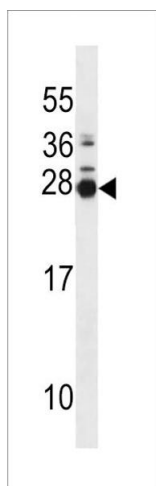
Preservative: Sodium azide

Precaution of Use: This product contains Sodium azide: a POISONOUS AND HAZARDOUS SUBSTANCE which should be handled by trained staff only.

Storage: 4 °C, -20 °C

Storage Comment: MOL2B Antibody (N-term) can be refrigerated at 2-8 °C for up to 6 months. For long term storage, keep at -20 °C.

Expiry Date: 6 months



Western Blotting

Image 1. MOL2B Antibody (N-term) (ABIN1538808 and ABIN2848565) western blot analysis in mouse spleen tissue lysates (35 µg/lane). This demonstrates the MOL2B antibody detected the MOL2B protein (arrow).