

Datasheet for ABIN1538810  
**anti-BAF53A antibody (N-Term)**[Go to Product page](#)

## 1 Image

## Overview

Quantity:	400 µL
Target:	BAF53A
Binding Specificity:	AA 2-30, N-Term
Reactivity:	Human
Host:	Rabbit
Clonality:	Polyclonal
Conjugate:	This BAF53A antibody is un-conjugated
Application:	Western Blotting (WB)

## Product Details

Immunogen:	This ACTL6A antibody is generated from rabbits immunized with a KLH conjugated synthetic peptide between 2-30 amino acids from the N-terminal region of human ACTL6A.
Clone:	RB36747
Isotype:	Ig Fraction
Predicted Reactivity:	Pr, M
Purification:	This antibody is purified through a protein A column, followed by peptide affinity purification.

## Target Details

Target:	BAF53A
Alternative Name:	ACTL6A ( <a href="#">BAF53A Products</a> )

## Target Details

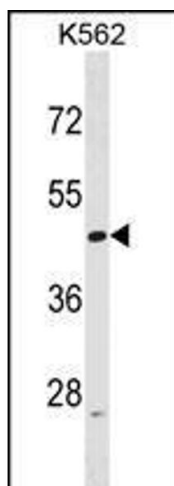
Background:	This gene encodes a family member of actin-related proteins (ARPs), which share significant amino acid sequence identity to conventional actins. Both actins and ARPs have an actin fold, which is an ATP-binding cleft, as a common feature. The ARPs are involved in diverse cellular processes, including vesicular transport, spindle orientation, nuclear migration and chromatin remodeling. This gene encodes a 53 kDa subunit protein of the BAF (BRG1/brm-associated factor) complex in mammals, which is functionally related to SWI/SNF complex in <i>S. cerevisiae</i> and <i>Drosophila</i> , the latter is thought to facilitate transcriptional activation of specific genes by antagonizing chromatin-mediated transcriptional repression. Together with beta-actin, it is required for maximal ATPase activity of BRG1, and for the association of the BAF complex with chromatin/matrix. Three transcript variants that encode two different protein isoforms have been described.
Molecular Weight:	47461
Gene ID:	86
NCBI Accession:	<a href="#">NP_004292</a> , <a href="#">NP_817126</a> , <a href="#">NP_829888</a>
UniProt:	<a href="#">O96019</a>
Pathways:	<a href="#">Chromatin Binding</a> , <a href="#">Photoperiodism</a>

## Application Details

Application Notes:	WB: 1:1000
Restrictions:	For Research Use only

## Handling

Format:	Liquid
Buffer:	Purified polyclonal antibody supplied in PBS with 0.09 % (W/V) sodium azide.
Preservative:	Sodium azide
Precaution of Use:	This product contains Sodium azide: a POISONOUS AND HAZARDOUS SUBSTANCE which should be handled by trained staff only.
Storage:	4 °C, -20 °C
Storage Comment:	ACTL6A Antibody (N-term) can be refrigerated at 2-8 °C for up to 6 months. For long term storage, keep at -20 °C.
Expiry Date:	6 months



#### Western Blotting

**Image 1.** ACTL6A Antibody (N-term) (ABIN1538810 and ABIN2848654) western blot analysis in K562 cell line lysates (35 µg/lane). This demonstrates the ACTL6A antibody detected the ACTL6A protein (arrow).