

Datasheet for ABIN1538823
anti-RBPJ antibody (N-Term)



[Go to Product page](#)

4 Images

Overview

Quantity:	400 µL
Target:	RBPJ
Binding Specificity:	AA 1-29, N-Term
Reactivity:	Human
Host:	Rabbit
Clonality:	Polyclonal
Conjugate:	This RBPJ antibody is un-conjugated
Application:	Western Blotting (WB), Immunofluorescence (IF), Immunohistochemistry (Paraffin-embedded Sections) (IHC (p))

Product Details

Immunogen:	This RBPJ antibody is generated from rabbits immunized with a KLH conjugated synthetic peptide between 1-29 amino acids from the N-terminal region of human RBPJ.
Clone:	RB36620
Isotype:	Ig Fraction
Purification:	This antibody is purified through a protein A column, followed by peptide affinity purification.

Target Details

Target:	RBPJ
Alternative Name:	RBPJ (RBPJ Products)

Target Details

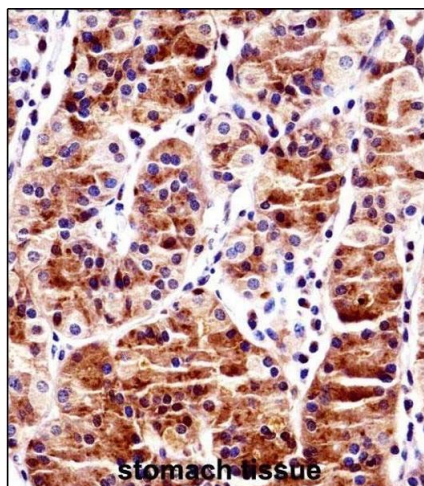
Background:	Transcriptional regulator that plays a central role in Notch signaling, a signaling pathway involved in cell-cell communication that regulates a broad spectrum of cell-fate determinations. Acts as a transcriptional repressor when it is not associated with Notch proteins. When associated with some Notch protein, it acts as a transcriptional activator that activates transcription of Notch target genes. Probably represses or activates transcription via the recruitment of chromatin remodeling complexes containing histone deacetylase or histone acetylase proteins, respectively. Specifically binds to the immunoglobulin kappa-type J segment recombination signal sequence.
Molecular Weight:	55637
Gene ID:	3516
NCBI Accession:	NP_005340 , NP_056958 , NP_976028 , NP_976029
UniProt:	Q06330
Pathways:	Notch Signaling , Stem Cell Maintenance , Smooth Muscle Cell Migration

Application Details

Application Notes:	IF: 1:10~50. WB: 1:2000. WB: 1:1000. IHC-P: 1:10~50
Restrictions:	For Research Use only

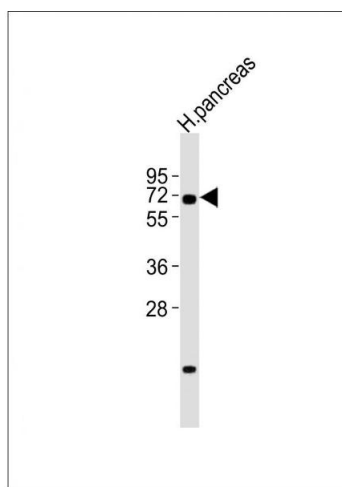
Handling

Format:	Liquid
Buffer:	Purified polyclonal antibody supplied in PBS with 0.09 % (W/V) sodium azide.
Preservative:	Sodium azide
Precaution of Use:	This product contains Sodium azide: a POISONOUS AND HAZARDOUS SUBSTANCE which should be handled by trained staff only.
Storage:	4 °C,-20 °C
Storage Comment:	RBPJ Antibody (N-term) can be refrigerated at 2-8 °C for up to 6 months. For long term storage, keep at -20 °C.
Expiry Date:	6 months



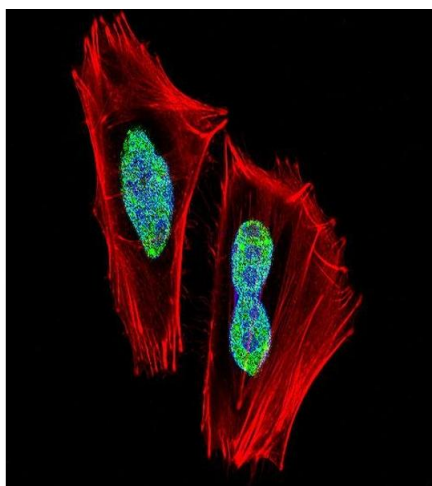
Immunohistochemistry (Paraffin-embedded Sections)

Image 1. RBPJ Antibody (N-term) ((ABIN1538823 and ABIN2849020))immunohistochemistry analysis in formalin fixed and paraffin embedded human stomach tissue followed by peroxidase conjugation of the secondary antibody and DAB staining.This data demonstrates the use of RBPJ Antibody (N-term) for immunohistochemistry. Clinical relevance has not been evaluated.



Western Blotting

Image 2. Anti-RBPJ Antibody (N-term)at 1:2000 dilution + human pancreas lysates Lysates/proteins at 20 µg per lane. Secondary Goat Anti-Rabbit IgG, (H+L), Peroxidase conjugated at 1/10000 dilution Predicted band size : 56 kDa Blocking/Dilution buffer: 5 % NFDm/TBST.



Immunofluorescence

Image 3. Fluorescent confocal image of cell stained with RBPJ Antibody (N-term) (ABIN1538823 and ABIN2849020). cells were fixed with 4 % PFA (20 min), permeabilized with Triton X-100 (0.1 %, 10 min), then incubated with RBPJ primary antibody (1:25, 1 h at 37 °C). For secondary antibody, Alexa Fluor® 488 conjugated donkey anti-rabbit antibody (green) was used (1:400, 50 min at 37 °C).Cytoplasmic actin was counterstained with Alexa Fluor® 555 (red) conjugated Phalloidin (7 units/mL, 1 h at 37 °C). Nuclei were counterstained with DAPI (blue) (10 µg/mL, 10 min). RBPJ immunoreactivity is localized to nucleus significantly.

Please check the [product details page](#) for more images. Overall 4 images are available for ABIN1538823.