



[Go to Product page](#)

Datasheet for ABIN1538829
anti-CCDC112 antibody (N-Term)

1 Image

Overview

Quantity:	400 µL
Target:	CCDC112
Binding Specificity:	AA 1-30, N-Term
Reactivity:	Human
Host:	Rabbit
Clonality:	Polyclonal
Conjugate:	This CCDC112 antibody is un-conjugated
Application:	Western Blotting (WB)

Product Details

Immunogen:	This CCDC112 antibody is generated from rabbits immunized with a KLH conjugated synthetic peptide between 1-30 amino acids from the N-terminal region of human CCDC112.
Clone:	RB37835
Isotype:	Ig Fraction
Predicted Reactivity:	Pr
Purification:	This antibody is purified through a protein A column, followed by peptide affinity purification.

Target Details

Target:	CCDC112
Alternative Name:	CCDC112 (CCDC112 Products)

Target Details

Background: The function of this protein remains unknown.

Molecular Weight: 53565

Gene ID: 153733

NCBI Accession: [NP_001035530](#), [NP_689762](#)

UniProt: [Q8NEF3](#)

Application Details

Application Notes: WB: 1:1000

Restrictions: For Research Use only

Handling

Format: Liquid

Buffer: Purified polyclonal antibody supplied in PBS with 0.09 % (W/V) sodium azide.

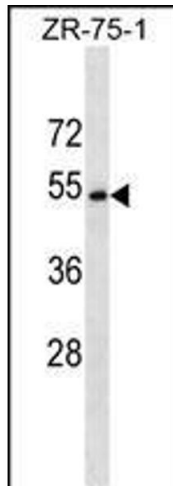
Preservative: Sodium azide

Precaution of Use: This product contains Sodium azide: a POISONOUS AND HAZARDOUS SUBSTANCE which should be handled by trained staff only.

Storage: 4 °C, -20 °C

Storage Comment: CCDC112 Antibody (N-term) can be refrigerated at 2-8 °C for up to 6 months. For long term storage, keep at -20 °C.

Expiry Date: 6 months



Western Blotting

Image 1. CCD Antibody (N-term) (ABIN1538829 and ABIN2849113) western blot analysis in ZR-75-1 cell line lysates (35 µg/lane). This demonstrates the CCD antibody detected the CCD protein (arrow).