

Datasheet for ABIN1538841  
**anti-CGB antibody (N-Term)**[Go to Product page](#)

## 1 Image

## Overview

Quantity:	400 µL
Target:	CGB (CGB1)
Binding Specificity:	AA 1-30, N-Term
Reactivity:	Human
Host:	Rabbit
Clonality:	Polyclonal
Conjugate:	This CGB antibody is un-conjugated
Application:	Western Blotting (WB)

## Product Details

Immunogen:	This CGB2 antibody is generated from rabbits immunized with a KLH conjugated synthetic peptide between 1-30 amino acids from the N-terminal region of human CGB2.
Clone:	RB30423
Isotype:	Ig Fraction
Purification:	This antibody is purified through a protein A column, followed by peptide affinity purification.

## Target Details

Target:	CGB (CGB1)
Alternative Name:	CGB1 ( <a href="#">CGB1 Products</a> )
Background:	RelevanceHuman chorionic gonadotropin (hCG) is a glycoprotein hormone produced by

## Target Details

trophoblastic cells of the placenta beginning 10 to 12 days after conception. Maintenance of the fetus in the first trimester of pregnancy requires the production of hCG, which binds to the corpus luteum of the ovary which is stimulated to produce progesterone which in turn maintains the secretory endometrium. The beta subunit of chorionic gonadotropin (CG) is encoded by 6 highly homologous genes which are arranged in tandem and inverted pairs on chromosome 19q13.3, and contiguous with the luteinizing hormone beta subunit gene.

Molecular Weight: 20468

Gene ID: 114336

UniProt: [A6NKQ9](#)

## Application Details

Application Notes: WB: 1:1000

Restrictions: For Research Use only

## Handling

Format: Liquid

Buffer: Purified polyclonal antibody supplied in PBS with 0.09 % (W/V) sodium azide.

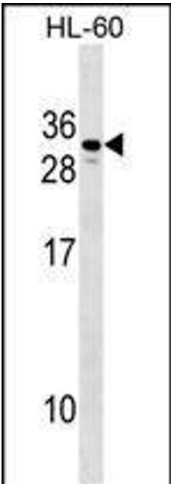
Preservative: Sodium azide

Precaution of Use: This product contains Sodium azide: a POISONOUS AND HAZARDOUS SUBSTANCE which should be handled by trained staff only.

Storage: 4 °C,-20 °C

Storage Comment: CGB2 Antibody (N-term) can be refrigerated at 2-8 °C for up to 6 months. For long term storage, keep at -20 °C.

Expiry Date: 6 months



Western Blotting

**Image 1.** CGB2 Antibody (N-term) (ABIN1538841 and ABIN2849420) western blot analysis in HL-60 cell line lysates (35 µg/lane). This demonstrates the CGB2 antibody detected the CGB2 protein (arrow).