



Datasheet for ABIN1538842 **anti-ELOVL1 antibody (N-Term)**



[Go to Product page](#)

1 Image

Overview

Quantity:	400 µL
Target:	ELOVL1
Binding Specificity:	AA 1-30, N-Term
Reactivity:	Human
Host:	Rabbit
Clonality:	Polyclonal
Application:	Western Blotting (WB)

Product Details

Immunogen:	This ELOVL1 antibody is generated from rabbits immunized with a KLH conjugated synthetic peptide between 1-30 amino acids from the N-terminal region of human ELOVL1.
Clone:	RB32889
Isotype:	Ig Fraction
Purification:	This antibody is purified through a protein A column, followed by peptide affinity purification.

Target Details

Target:	ELOVL1
Alternative Name:	ELOVL1 (ELOVL1 Products)
Background:	ELOVL1 could be implicated in tissue-specific synthesis of very long chain fatty acids and sphingolipids. May catalyze one or both of the reduction reaction in fatty acid elongation, i.e., conversion of beta-ketoacyl CoA to beta-hydroxyacyl CoA or reduction of trans-2-enoyl CoA to

Target Details

the saturated acyl CoA derivative (By similarity).

Molecular Weight: 32663

Gene ID: 64834

NCBI Accession: [NP_001243328](#), [NP_001243330](#), [NP_001243331](#), [NP_073732](#)

UniProt: [Q9BW60](#)

Application Details

Application Notes: WB: 1:1000

Restrictions: For Research Use only

Handling

Format: Liquid

Buffer: Purified polyclonal antibody supplied in PBS with 0.09 % (W/V) sodium azide.

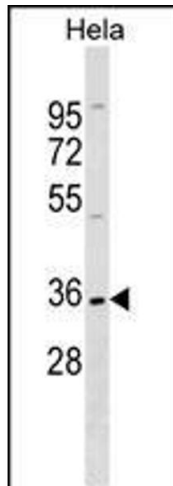
Preservative: Sodium azide

Precaution of Use: This product contains Sodium azide: a POISONOUS AND HAZARDOUS SUBSTANCE which should be handled by trained staff only.

Storage: 4 °C,-20 °C

Storage Comment: ELOVL1 Antibody (N-term) can be refrigerated at 2-8 °C for up to 6 months. For long term storage, keep at -20 °C.

Expiry Date: 6 months



Western Blotting

Image 1. ELOVL1 Antibody (N-term) (ABIN1538842 and ABIN2849424) western blot analysis in HeLa cell line lysates (35 µg/lane). This demonstrates the ELOVL1 antibody detected the ELOVL1 protein (arrow).