

Datasheet for ABIN1538847
anti-GLIPR2 antibody (N-Term)[Go to Product page](#)

1 Image

Overview

Quantity:	400 µL
Target:	GLIPR2
Binding Specificity:	AA 1-30, N-Term
Reactivity:	Human
Host:	Rabbit
Clonality:	Polyclonal
Conjugate:	This GLIPR2 antibody is un-conjugated
Application:	Western Blotting (WB)

Product Details

Immunogen:	This GAPR1 antibody is generated from rabbits immunized with a KLH conjugated synthetic peptide between 1-30 amino acids from the N-terminal region of human GAPR1.
Clone:	RB25221
Isotype:	Ig Fraction
Purification:	This antibody is purified through a protein A column, followed by peptide affinity purification.

Target Details

Target:	GLIPR2
Alternative Name:	GAPR1 (GLIPR2 Products)
Background:	GLIPR2 belongs to the CRISP family.

Target Details

Molecular Weight:	17218
Gene ID:	152007
NCBI Accession:	NP_071738
UniProt:	Q9H4G4

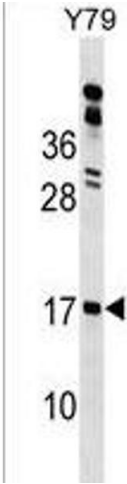
Application Details

Application Notes:	WB: 1:1000
Restrictions:	For Research Use only

Handling

Format:	Liquid
Buffer:	Purified polyclonal antibody supplied in PBS with 0.09 % (W/V) sodium azide.
Preservative:	Sodium azide
Precaution of Use:	This product contains Sodium azide: a POISONOUS AND HAZARDOUS SUBSTANCE which should be handled by trained staff only.
Storage:	4 °C,-20 °C
Storage Comment:	GAPR1 Antibody (N-term) can be refrigerated at 2-8 °C for up to 6 months. For long term storage, keep at -20 °C.
Expiry Date:	6 months

Images



Western Blotting

Image 1. GR1 Antibody (N-term) 18154a western blot analysis in Y79 cell line lysates (35 µg/lane). This demonstrates the GR1 antibody detected the GR1 protein (arrow).