



[Go to Product page](#)

Datasheet for ABIN1538854
anti-CORO2B antibody (N-Term)

1 Image

Overview

Quantity:	400 µL
Target:	CORO2B
Binding Specificity:	AA 1-27, N-Term
Reactivity:	Human
Host:	Rabbit
Clonality:	Polyclonal
Conjugate:	This CORO2B antibody is un-conjugated
Application:	Western Blotting (WB)

Product Details

Immunogen:	This CORO2B antibody is generated from rabbits immunized with a KLH conjugated synthetic peptide between 1-27 amino acids from the N-terminal region of human CORO2B.
Clone:	RB38212
Isotype:	Ig Fraction
Purification:	This antibody is purified through a protein A column, followed by peptide affinity purification.

Target Details

Target:	CORO2B
Alternative Name:	CORO2B (CORO2B Products)
Background:	CORO2B may play a role in the reorganization of neuronal actin structure.

Target Details

Molecular Weight:	54953
Gene ID:	10391
NCBI Accession:	NP_001177385 , NP_001177386 , NP_006082
UniProt:	Q9UQ03

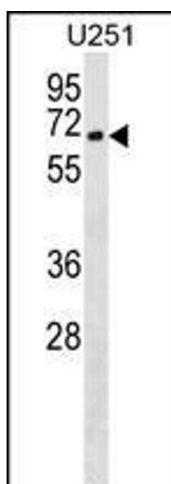
Application Details

Application Notes:	WB: 1:1000
Restrictions:	For Research Use only

Handling

Format:	Liquid
Buffer:	Purified polyclonal antibody supplied in PBS with 0.09 % (W/V) sodium azide.
Preservative:	Sodium azide
Precaution of Use:	This product contains Sodium azide: a POISONOUS AND HAZARDOUS SUBSTANCE which should be handled by trained staff only.
Storage:	4 °C, -20 °C
Storage Comment:	CORO2B Antibody (N-term) can be refrigerated at 2-8 °C for up to 6 months. For long term storage, keep at -20 °C.
Expiry Date:	6 months

Images



Western Blotting

Image 1. CORO2B Antibody (N-term) (ABIN1538854 and ABIN2849763) western blot analysis in cell line lysates (35 μ g/lane). This demonstrates the CORO2B antibody detected the CORO2B protein (arrow).