



[Go to Product page](#)

Datasheet for ABIN1538855
anti-Plasmolipin antibody (N-Term)

1 Image

Overview

Quantity:	400 µL
Target:	Plasmolipin
Binding Specificity:	AA 1-30, N-Term
Reactivity:	Human
Host:	Rabbit
Clonality:	Polyclonal
Conjugate:	This Plasmolipin antibody is un-conjugated
Application:	Western Blotting (WB)

Product Details

Immunogen:	This PLLP antibody is generated from rabbits immunized with a KLH conjugated synthetic peptide between 1-30 amino acids from the N-terminal region of human PLLP.
Clone:	RB38337
Isotype:	Ig Fraction
Predicted Reactivity:	M, Rat
Purification:	This antibody is purified through a protein A column, followed by peptide affinity purification.

Target Details

Target:	Plasmolipin
Alternative Name:	PLLP (Plasmolipin Products)

Target Details

Background: PLLP appears to be involved in myelination. Could also participate in ion transport events as addition of plasmalipin to lipid bilayers induces the formation of ion channels, which are voltage-dependent and K(+)-selective (By similarity).

Molecular Weight: 19987

Gene ID: 51090

NCBI Accession: [NP_057077](#)

UniProt: [Q9Y342](#)

Application Details

Application Notes: WB: 1:1000

Restrictions: For Research Use only

Handling

Format: Liquid

Buffer: Purified polyclonal antibody supplied in PBS with 0.09 % (W/V) sodium azide.

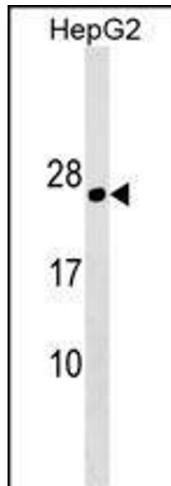
Preservative: Sodium azide

Precaution of Use: This product contains Sodium azide: a POISONOUS AND HAZARDOUS SUBSTANCE which should be handled by trained staff only.

Storage: 4 °C, -20 °C

Storage Comment: PLLP Antibody (N-term) can be refrigerated at 2-8 °C for up to 6 months. For long term storage, keep at -20 °C.

Expiry Date: 6 months



Western Blotting

Image 1. PLLP Antibody (N-term) (ABIN1538855 and ABIN2849782) western blot analysis in HepG2 cell line lysates (35 µg/lane). This demonstrates the PLLP antibody detected the PLLP protein (arrow).