

Datasheet for ABIN1538856
anti-TCEAL2 antibody (N-Term)



[Go to Product page](#)

1 Image

Overview

Quantity:	400 µL
Target:	TCEAL2
Binding Specificity:	AA 1-30, N-Term
Reactivity:	Human
Host:	Rabbit
Clonality:	Polyclonal
Conjugate:	This TCEAL2 antibody is un-conjugated
Application:	Western Blotting (WB)

Product Details

Immunogen:	This TCEAL2 antibody is generated from rabbits immunized with a KLH conjugated synthetic peptide between 1-30 amino acids from the N-terminal region of human TCEAL2.
Clone:	RB38366
Isotype:	Ig Fraction
Purification:	This antibody is purified through a protein A column, followed by peptide affinity purification.

Target Details

Target:	TCEAL2
Alternative Name:	TCEAL2 (TCEAL2 Products)
Background:	This gene encodes a member of the transcription elongation factor A (SII)-like (TCEAL) gene

Target Details

family. Members of this family contain TFA domains and may function as nuclear phosphoproteins that modulate transcription in a promoter context-dependent manner. Multiple family members are located on the X chromosome. [provided by RefSeq].

Molecular Weight: 25850

Gene ID: 140597

NCBI Accession: [NP_525129](#)

UniProt: [Q9H3H9](#)

Application Details

Application Notes: WB: 1:1000

Restrictions: For Research Use only

Handling

Format: Liquid

Buffer: Purified polyclonal antibody supplied in PBS with 0.09 % (W/V) sodium azide.

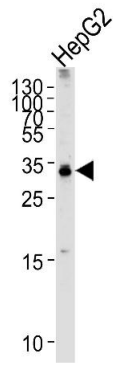
Preservative: Sodium azide

Precaution of Use: This product contains Sodium azide: a POISONOUS AND HAZARDOUS SUBSTANCE which should be handled by trained staff only.

Storage: 4 °C, -20 °C

Storage Comment: TCEAL2 Antibody (N-term) can be refrigerated at 2-8 °C for up to 6 months. For long term storage, keep at -20 °C.

Expiry Date: 6 months



Western Blotting

Image 1. Western blot analysis of lysate from HepG2 cell line, using TCEAL2 Antibody (N-term) (ABIN1538856 and ABIN2849791). (ABIN1538856 and ABIN2849791) was diluted at 1:1000 at each lane. A goat anti-rabbit IgG H&L(HRP) at 1:5000 dilution was used as the secondary antibody. Lysate at 35 µg per lane.