

Datasheet for ABIN1538859  
**anti-TFE3 antibody (N-Term)**[Go to Product page](#)

## 4 Images

## Overview

Quantity:	400 µL
Target:	TFE3
Binding Specificity:	AA 1-30, N-Term
Reactivity:	Human, Mouse
Host:	Rabbit
Clonality:	Polyclonal
Conjugate:	This TFE3 antibody is un-conjugated
Application:	Western Blotting (WB), Immunofluorescence (IF)

## Product Details

Immunogen:	This TFE3 antibody is generated from rabbits immunized with a KLH conjugated synthetic peptide between 1-30 amino acids from the N-terminal region of human TFE3.
Clone:	RB20263
Isotype:	Ig Fraction
Purification:	This antibody is purified through a protein A column, followed by peptide affinity purification.

## Target Details

Target:	TFE3
Alternative Name:	TFE3 ( <a href="#">TFE3 Products</a> )
Background:	The microphthalmia transcription factor/transcription factor E (MITF-TFE) family of basic helix-

## Target Details

loop-helix leucine zipper (bHLH-Zip) transcription factors includes four family members: MTF, TFE3, TFEB and TFEC. The TEF3 protein encoded by this gene activates transcription through binding to the muE3 motif of the immunoglobulin heavy-chain enhancer. The TFEC protein forms heterodimers with the TEF3 protein and inhibits TFE3-dependent transcription activation. The TEF3 protein interacts with transcription regulators such as E2F3, SMAD3, and LEF-1, and is involved in TGF-beta-induced transcription, playing important roles in cell growth, proliferation, and osteoclast and macrophage differentiation. The TFE3 protein also activates hepatic IRS-2 gene, and induces hexokinase II (HK2) and insulin-induced gene 1 (INSIG1), it participates in insulin signaling and could be a therapeutic target for diabetes. This gene is also involved in chromosomal translocations, resulting in different fusion gene products in papillary renal cell carcinomas and alveolar soft part sarcomas, such as PRCC-TFE3, RCC17-TFE3, PSF-TFE3, NonO (p54nrb)-TFE3 and ASPL-TFE3.

Molecular Weight:	61521
-------------------	-------

Gene ID:	7030
----------	------

NCBI Accession:	<a href="#">NP_006512</a>
-----------------	---------------------------

UniProt:	<a href="#">P19532</a>
----------	------------------------

## Application Details

Application Notes:	IF: 1:10~50. WB: 1:2000. WB: 1:1000. WB: 1:1000
--------------------	---

Restrictions:	For Research Use only
---------------	-----------------------

## Handling

Format:	Liquid
---------	--------

Buffer:	Purified polyclonal antibody supplied in PBS with 0.09 % (W/V) sodium azide.
---------	--

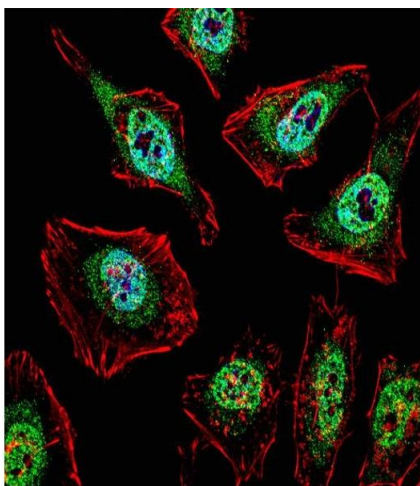
Preservative:	Sodium azide
---------------	--------------

Precaution of Use:	This product contains Sodium azide: a POISONOUS AND HAZARDOUS SUBSTANCE which should be handled by trained staff only.
--------------------	--

Storage:	4 °C,-20 °C
----------	-------------

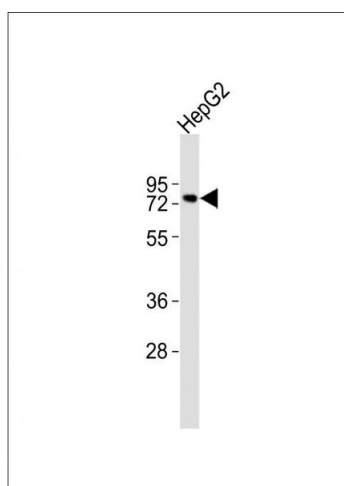
Storage Comment:	TFE3 Antibody (N-term) can be refrigerated at 2-8 °C for up to 6 months. For long term storage, keep at -20 °C.
------------------	---

Expiry Date:	6 months
--------------	----------



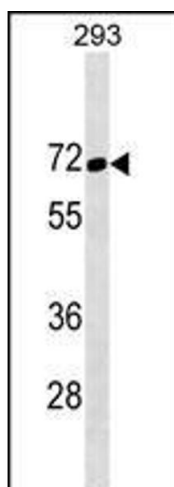
### Immunofluorescence

**Image 1.** Fluorescent confocal image of HeLa cell stained with TFE3 Antibody (N-term) (ABIN1538859 and ABIN2849812). HeLa cells were fixed with 4 % PFA (20 min), permeabilized with Triton X-100 (0.1 %, 10 min), then incubated with TFE3 primary antibody (1:25, 1 h at 37 °C). For secondary antibody, Alexa Fluor® 488 conjugated donkey anti-rabbit antibody (green) was used (1:400, 50 min at 37 °C). Cytoplasmic actin was counterstained with Alexa Fluor® 555 (red) conjugated Phalloidin (7 units/mL, 1 h at 37 °C). Nuclei were counterstained with DAPI (blue) (10 µg/mL, 10 min). TFE3 immunoreactivity is localized to nucleus and Cytoplasm significantly.



### Western Blotting

**Image 2.** Anti-TFE3 Antibody (N-term) at 1:2000 dilution + HepG2 whole cell lysates. Lysates/proteins at 20 µg per lane. Secondary Goat Anti-Rabbit IgG, (H+L), Peroxidase conjugated at 1/10000 dilution. Predicted band size : 62 kDa. Blocking/Dilution buffer: 5 % NFDN/TBST.



### Western Blotting

**Image 3.** TFE3 Antibody (N-term) (ABIN1538859 and ABIN2849812) western blot analysis in 293 cell line lysates (35 µg/lane). This demonstrates the TFE3 Antibody detected the TFE3 protein (arrow).

Please check the [product details page](#) for more images. Overall 4 images are available for ABIN1538859.