

Datasheet for ABIN1538862
anti-TGIF2LY antibody (N-Term)[Go to Product page](#)

1 Image

Overview

Quantity:	400 µL
Target:	TGIF2LY
Binding Specificity:	AA 1-28, N-Term
Reactivity:	Human
Host:	Rabbit
Clonality:	Polyclonal
Application:	Western Blotting (WB)

Product Details

Immunogen:	This TGIF2LY antibody is generated from rabbits immunized with a KLH conjugated synthetic peptide between 1-28 amino acids from the N-terminal region of human TGIF2LY.
Clone:	RB38028
Isotype:	Ig Fraction
Purification:	This antibody is purified through a protein A column, followed by peptide affinity purification.

Target Details

Target:	TGIF2LY
Alternative Name:	TGIF2LY (TGIF2LY Products)
Background:	This gene encodes a member of the TALE/TGIF homeobox family of transcription factors. This gene lies within the male specific region of chromosome Y, in a block of sequence that is thought to be the result of a large X-to-Y transposition. The C-terminus of this protein is

Target Details

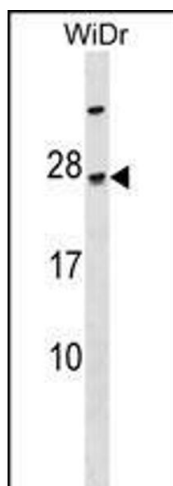
	divergent from that of its chromosome X homolog (TGIF2LX), suggesting that this protein may act as a regulator of TGIF2LX.
Molecular Weight:	20814
Gene ID:	90655
NCBI Accession:	NP_631960
UniProt:	Q8IUE0

Application Details

Application Notes:	WB: 1:1000
Restrictions:	For Research Use only

Handling

Format:	Liquid
Buffer:	Purified polyclonal antibody supplied in PBS with 0.09 % (W/V) sodium azide.
Preservative:	Sodium azide
Precaution of Use:	This product contains Sodium azide: a POISONOUS AND HAZARDOUS SUBSTANCE which should be handled by trained staff only.
Storage:	4 °C,-20 °C
Storage Comment:	TGIF2LY Antibody (N-term) can be refrigerated at 2-8 °C for up to 6 months. For long term storage, keep at -20 °C.
Expiry Date:	6 months



Western Blotting

Image 1. TGIF2LY Antibody (N-term) (ABIN1538862 and ABIN2849859) western blot analysis in WiDr cell line lysates (35 µg/lane). This demonstrates the TGIF2LY Antibody detected the TGIF2LY protein (arrow).