

Datasheet for ABIN1538863  
**anti-METTL2B antibody (N-Term)**[Go to Product page](#)

## 1 Image

## Overview

Quantity:	400 µL
Target:	METTL2B
Binding Specificity:	AA 1-30, N-Term
Reactivity:	Human
Host:	Rabbit
Clonality:	Polyclonal
Conjugate:	This METTL2B antibody is un-conjugated
Application:	Western Blotting (WB)

## Product Details

Immunogen:	This METTL2B antibody is generated from rabbits immunized with a KLH conjugated synthetic peptide between 1-30 amino acids from the N-terminal region of human METTL2B.
Clone:	RB38519
Isotype:	Ig Fraction
Purification:	This antibody is purified through a protein A column, followed by peptide affinity purification.

## Target Details

Target:	METTL2B
Alternative Name:	METTL2B ( <a href="#">METTL2B Products</a> )
Background:	This gene is a member of a family of methyltransferases that share homology with, but are

## Target Details

distinct from, the UbiE family of methyltransferases. Alternatively spliced variants which encode different protein isoforms have been described, however, not all variants have been fully characterized.

Molecular Weight: 43426

Gene ID: 55798

NCBI Accession: [NP\\_060866](#)

UniProt: [Q6P1Q9](#)

## Application Details

Application Notes: WB: 1:1000

Restrictions: For Research Use only

## Handling

Format: Liquid

Buffer: Purified polyclonal antibody supplied in PBS with 0.09 % (W/V) sodium azide.

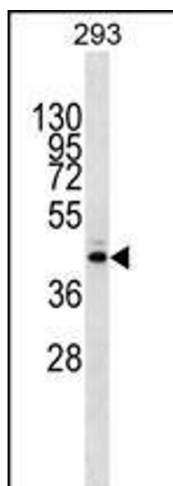
Preservative: Sodium azide

Precaution of Use: This product contains Sodium azide: a POISONOUS AND HAZARDOUS SUBSTANCE which should be handled by trained staff only.

Storage: 4 °C, -20 °C

Storage Comment: METTL2B Antibody (N-term) can be refrigerated at 2-8 °C for up to 6 months. For long term storage, keep at -20 °C.

Expiry Date: 6 months



#### Western Blotting

**Image 1.** METTL2B Antibody (N-term) (ABIN1538863 and ABIN2849901) western blot analysis in 293 cell line lysates (35 µg/lane). This demonstrates the METTL2B Antibody detected the METTL2B protein (arrow).