

Datasheet for ABIN1538881
anti-STOML1 antibody (N-Term)[Go to Product page](#)

1 Image

Overview

Quantity:	400 µL
Target:	STOML1
Binding Specificity:	AA 1-30, N-Term
Reactivity:	Human
Host:	Rabbit
Clonality:	Polyclonal
Application:	Western Blotting (WB)

Product Details

Immunogen:	This STOML1 antibody is generated from rabbits immunized with a KLH conjugated synthetic peptide between 1-30 amino acids from the N-terminal region of human STOML1.
Clone:	RB37368
Isotype:	Ig Fraction
Predicted Reactivity:	M
Purification:	This antibody is purified through a protein A column, followed by peptide affinity purification.

Target Details

Target:	STOML1
Alternative Name:	STOML1 (STOML1 Products)
Background:	STOML1 belongs to the band 7/mec-2 family and contains one SCP2 domain. It is ubiquitously

Target Details

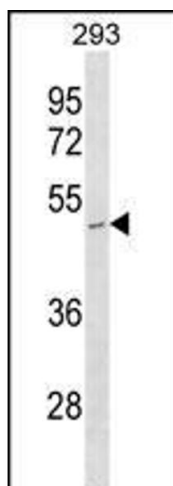
	expressed at low levels, expression is highest in brain. There are two named isoforms.
Molecular Weight:	42968
Gene ID:	9399
NCBI Accession:	NP_001243601 , NP_001243602 , NP_001243603 , NP_001243604 , NP_001243605 , NP_001243606 , NP_004800
UniProt:	Q9UBI4

Application Details

Application Notes:	WB: 1:1000
Restrictions:	For Research Use only

Handling

Format:	Liquid
Buffer:	Purified polyclonal antibody supplied in PBS with 0.09 % (W/V) sodium azide.
Preservative:	Sodium azide
Precaution of Use:	This product contains Sodium azide: a POISONOUS AND HAZARDOUS SUBSTANCE which should be handled by trained staff only.
Storage:	4 °C,-20 °C
Storage Comment:	STOML1 Antibody (N-term) can be refrigerated at 2-8 °C for up to 6 months. For long term storage, keep at -20 °C.
Expiry Date:	6 months



Western Blotting

Image 1. STOML1 Antibody (N-term) (ABIN1538881 and ABIN2850108) western blot analysis in 293 cell line lysates (35 µg/lane). This demonstrates the STOML1 antibody detected the STOML1 protein (arrow).